



CLEANPATCH® PRODUCTS INTRODUCTION

APRIL 2021

THE PROBLEM

Soft surfaces in healthcare facilities get damaged all the time from wear and tear, routine cleaning, and accidents such as punctures and rips. These surfaces cannot be disinfected properly no matter the cleaner used, increasing the risk of Hospital Acquired Infections (HAIs) to patients and workers.



Abrasion



Cut or Tear



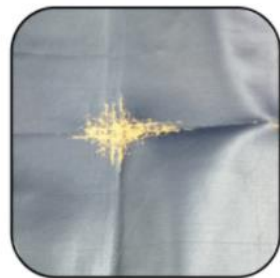
Puncture



Torn base < 10 cm



Previously Taped



Chemical Damage



CURRENT SOLUTIONS

Replacement

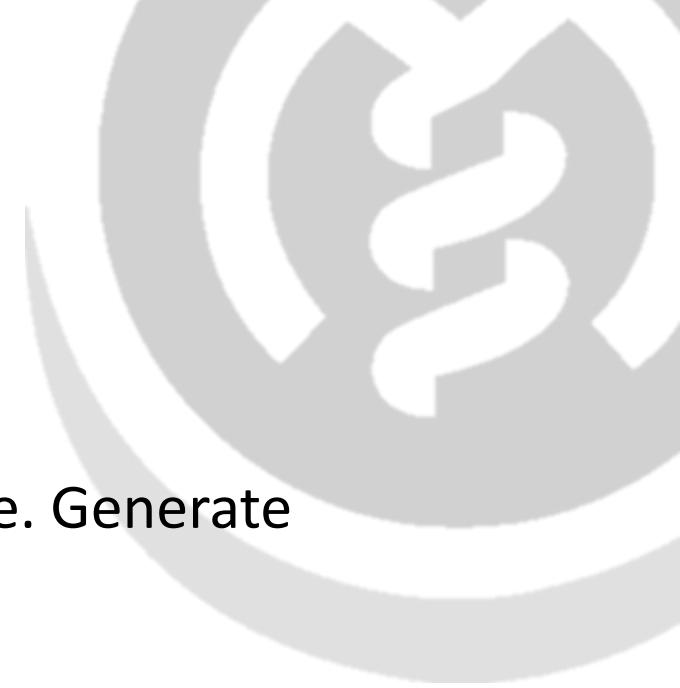
- Expensive. Time consuming. Take the equipment out of service. Generate wastes.

Taping (wound care dressing, duct tape, etc..)

- Not approved by Infection Prevention & Control. No clinical support. Does not work.

Do Nothing

- Put patients and workers at risk of HAIs



CLEANPATCH® PLATFORM

Peel-and-stick medical repair patch that restores compromised surfaces to an intact and cleanable state.

Key Features

- Market's only clinically-validated, FDA Registered Class 1 Medical Device to repair healthcare soft surfaces
- Medical grade. Designed to permanently adhere to the surface and to withstand cleaning with all common cleaners.

Value Propositions

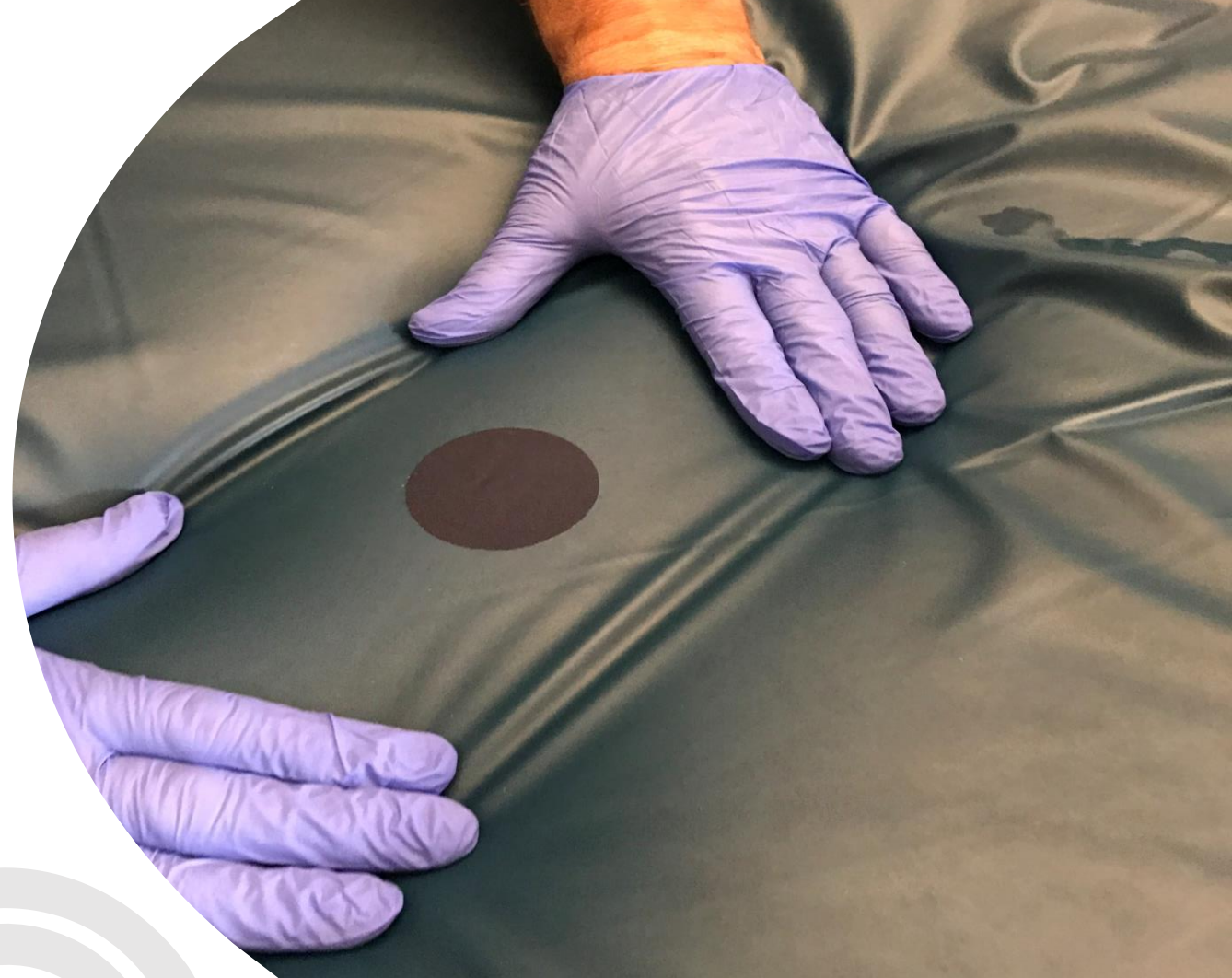
1. Significant direct and indirect cost savings over replacement (>95%)
2. Instantly address the problem to protect workers and patients
3. Keep the equipment in service
4. Fully realize use life of capital equipment
5. Reduces wastes

CLEANPatch[®]

Launched **2013**.

Key characteristics

- Repairs mattress covers, stretchers, and other polyurethane surfaces
- Repairs damaged up to 5.5in
- Made of medical grade, highly durable polyurethane material.
- Tested to ensure the edges are cleanable and do not harbour bacteria
- Tested for up to 3 years of simulated usage.
- Withstand cleaning with all common cleaners (Quats, AHP, Alcohol, bleach)
- FDA Class 1 Medical Device
- Acute Care, Long Term, Ambulatory Care.
- Available in blue only



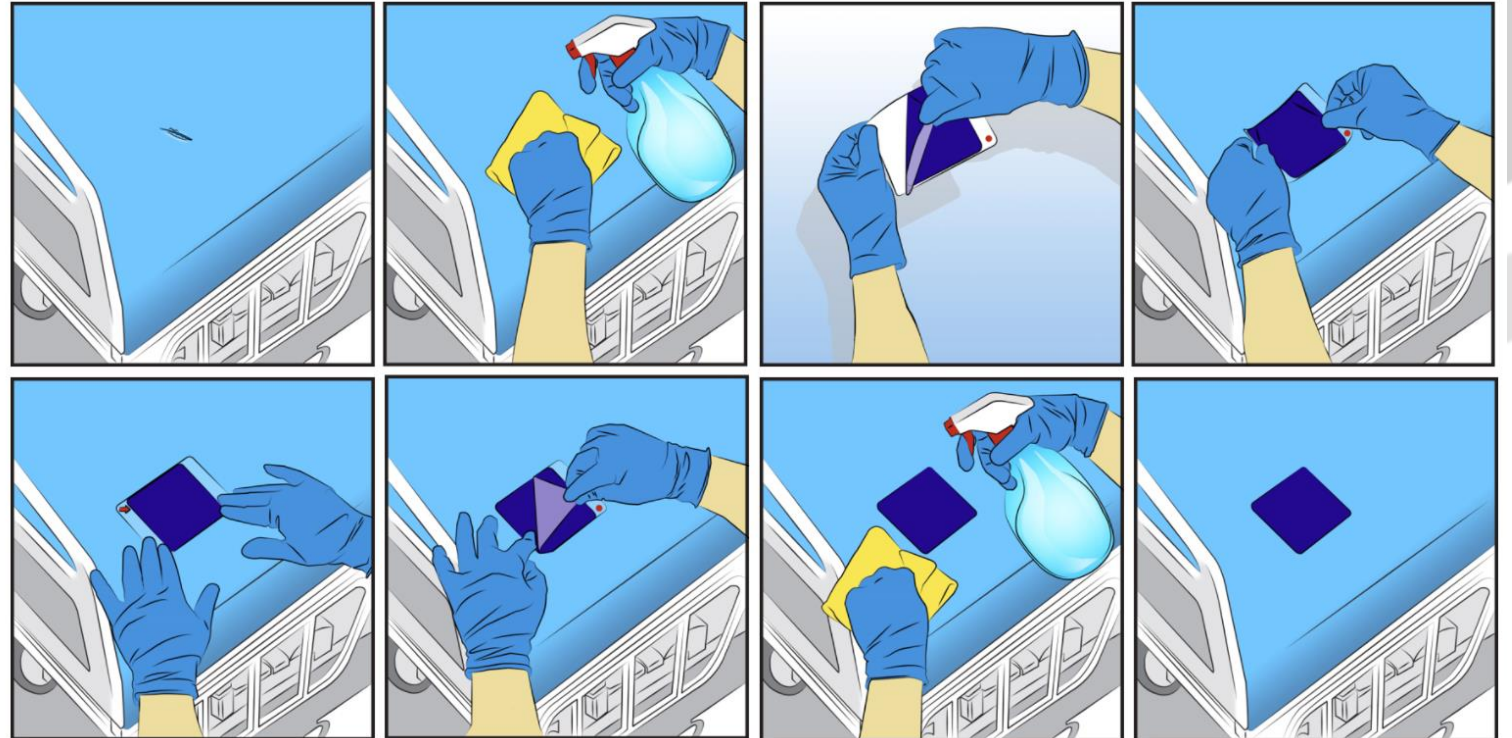
CLEANPatch®

Available in 3 sizes

Small: 2in Circle

Medium: 3.5x3.5in

Large: 6 x 3.5in



CLEANPatch[®]-V

Launched **early 2019**. Originally in the rehab market only, but expanding.

Key characteristics

- Repairs vinyl upholstery such as treatment tables, wheelchairs, geriatric chairs, rehab equipment, patient furniture, etc..
- Repairs damaged up to 5in
- Made of medical grade, highly durable vinyl.
- Tested to ensure the edges are cleanable and do not harbour bacteria
- Tested for up to 3 years of simulated usage on wheelchair (ISO test protocol)
- Withstand cleaning with all common cleaners (Quats, AHP, Alcohol, bleach)
- FDA Class 1 Medical Device
- Surgical centers, outpatient clinics, rehab clinics, acute care, long term care, and paramedical
- Available in black only (for the moment)



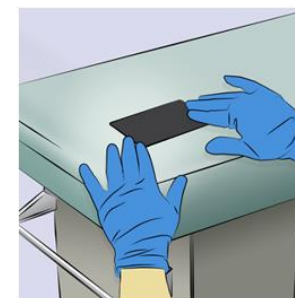
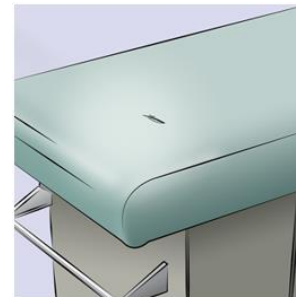
CLEANPatch[®]-V

Available in 2 sizes

Small: 4 x 1.75in

Large: 8 x 5.75in

ITEM #	Product Description	UPC Code Number
21001	CleanPatch-V Strip (1.75 x 4inch) - box of 10	882901210012
22001	CleanPatch-V Rectangle (5.75 x 8inch) - box of 5	882901220011
23001	CleanPatch-V Variety Kit - box of 10 (7 Strip + 3 Rectangle)	882901230010



CLEANPatch[®]-P

New to Market.

Key characteristics

- Repair gel pads and positioners
- Repairs damaged up to 1.5in
- Made of medical grade, high grip, transparent material
- Tested to ensure the edges are cleanable and do not harbour bacteria
- Withstand cleaning with all common cleaners (Quats, AHP, Alcohol, bleach)
- FDA registered Class 1 Medical Device
- Transparent

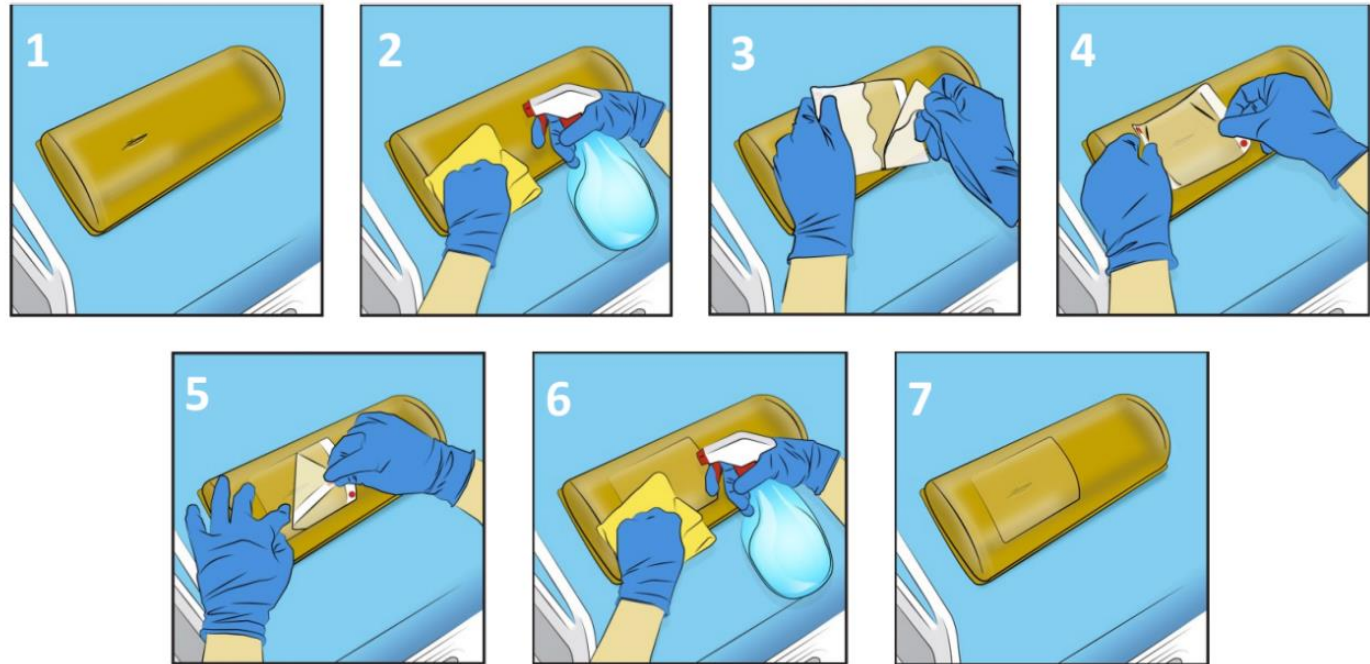


CLEANPatch[®]-P

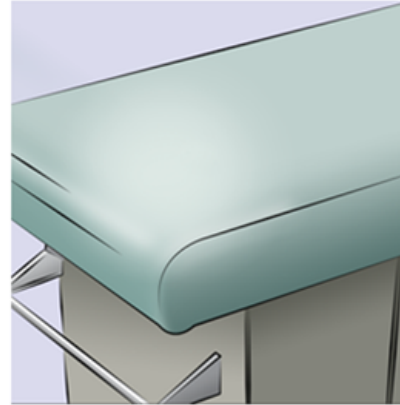
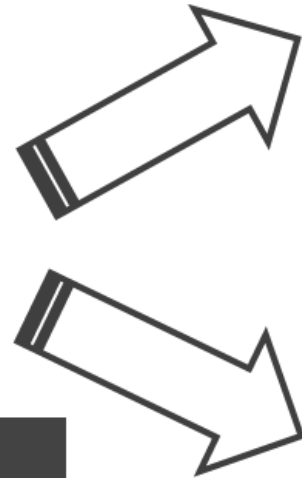
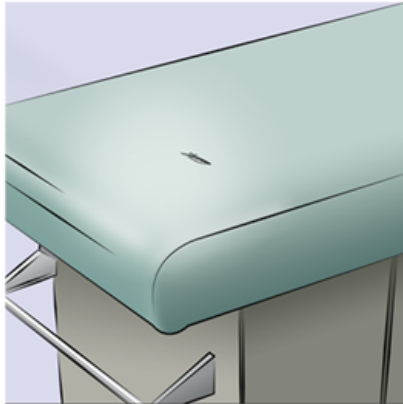
Available in 1 size

3.5 x 1.75 in

ITEM #	Product Description	UPC Code Number
31001	CleanPatch P. 3.5 x 1.75in - box of 10	882901310019



SURFACE INSPECTION AND REPAIR PROTOCOL



REPLACE / RECOVER

3-D Corners

Large points of Damage

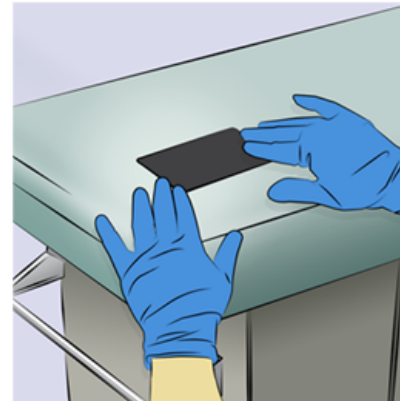
Signs of Fluid ingress

ASSESSMENT

Damage Size?

Damage Location?

Any signs of Fluid Ingress?



REPAIR

1-D / 2-D Surface

Small points of Damage

No Signs of Fluid ingress

RESOURCES AND SUPPORT

<https://cleanpatch.ca/resources/case-studies/>

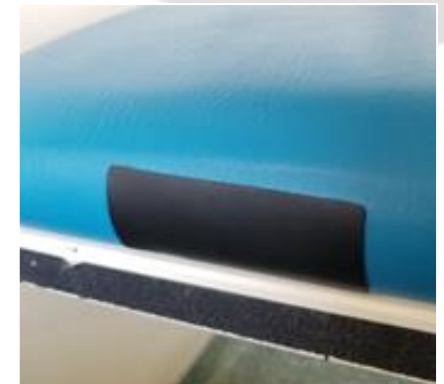
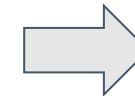
allen.b@SanitisGlobal.com

CASE STUDY – COST SAVINGS

A leading Canadian Rehab Facility saved **\$4,500** by repairing 12 Exam Tables

- Reupholstery cost avoided = \$400/table
- CleanPatch-V cost = \$17-42 each

Location	# Damaged Tables	CleanPatch-V Used	Cost Savings
Building 1	6	9	\$2238
Building 2	4	5	\$1515
Building 3	2	4	\$741



RECENT UPDATES

- 2018 – The Joint Commission updated their guidance document for environmental infection prevention to include:
 - “avoid tears or holes in upholstery or mattresses. **Patch** any holes or tears with an approved product that can be cleaned and disinfected (that is, no tape).”
- 2018 - Peer-reviewed publication in the Canadian Journal of Infection Control on hospital mattress inspection and repair with CleanPatch. (Marks *et al.* 2018. CJIC. Fall 2018. 33(3) 171-175.
- 2020 – Surface Medical selected as Top 10 Infection Control Service Providers in 2020 by MedTech Outlook
- 2020 – Surface Medical featured in Health Europe, COVID-19 edition