



Genesis™

Waterproof Performance Ceiling Panels

- Waterproof and washable
- Class “A” fire-rated
- 2' x 2' and 2' x 4' panel sizes
- Installs in any existing or new grid system
- Lightweight installation
- Impact-resistant
- Mold- and mildew-resistant
- Dust free, non-shedding material
- Will not spot, stain, rot or peel from moisture
- Will not sag or swell from moisture
- 25-year warranty

NEVER REPLACE A DAMAGED CEILING TILE AGAIN

- USDA, FDA & CFIA compliant
- Waterproof and washable
- Mold- and mildew-resistant
- Class “A” fire-rated
- 2' x 2' & 2' x 4' tile sizes

Features	Benefits
100% Waterproof	Guaranteed not to water-stain, rot or swell from moisture — ideal in moist and humid areas
Washable	Easy removal to power wash, scrub and sanitize with bleach or disinfectant
Resists Mold & Mildew	Eliminates costly downtime and remediation due to “sick” building syndrome as Genesis is not susceptible to humidity and moisture
Class “A” Fire Rated	Meets Class “A” FSI and SDI ratings per ASTM E84
Fiberglass Free	No harmful or irritating fiberglass dust
USDA, FDA & CFIA Compliant	May be used in federally-inspected food processing plants, central kitchens and restaurants
Durable PVC Construction	Extreme durability extends product life—less susceptible to damage during installation and maintenance
UV Resistant	Will not yellow over time from sunlight or fluorescent lighting
Solid Color	Solid color throughout provides consistent color appearance
Easy Installation	Will lay into existing drop ceiling grid systems made for both 2'x 2' or 2' x 4' ceiling panels
Warranty	25-Year Limited Warranty

	Genesis	Vinyl-Clad Gypsum	Mineral Board
100% Waterproof	•		
Resists Mold & Mildew	•		○
Washable	•		
Class “A” Fire Rating	•	•	○
Easy to Cut	•		•
Fiberglass Free	•	•	○
USDA, FDA & CFIA Compliant	•	•	
Durable	•	•	
Stain Resistant	•	•	
UV Stable	•		

○ only if specified



Genesis™

Waterproof Performance Ceiling Panels

Genesis tiles are perfect for food processing plants, healthcare and education facilities, commercial kitchens, high-humidity climates, science and pharmaceutical labs, clean rooms and marine applications.

Standard Series

	Item #	Dimensions
2' x 2' Smooth Pro White	740-00 (12 per case)	23 3/4" x 23 3/4" x 5/32"
2' x 2' Smooth Pro Black	740-07 (12 per case)	23 3/4" x 23 3/4" x 5/32"
2' x 4' Smooth Pro White	745-00 (10 per case)	23 3/4" x 47 3/4" x 3/16"
2' x 4' Smooth Pro Black	745-07 (10 per case)	23 3/4" x 47 3/4" x 3/16"
2' x 2' Printed Pro*	741-00 (12 per case)	23 3/4" x 23 3/4" x 5/32"
2' x 4' Printed Pro*	746-00 (10 per case)	23 3/4" x 47 3/4" x 3/16"
2' x 2' Stucco Pro White	760-00 (12 per case)	23 3/4" x 23 3/4" x 5/32"
2' x 2' Stucco Pro Black	760-07 (12 per case)	23 3/4" x 23 3/4" x 5/32"
2' x 4' Stucco Pro White	765-00 (10 per case)	23 3/4" x 47 3/4" x 3/16"
2' x 4' Stucco Pro Black	765-07 (10 per case)	23 3/4" x 47 3/4" x 3/16"
2' x 2' Stucco Pro Revealed Edge White	770-00 (12 per case)	23 3/4" x 23 3/4" x 5/32"
2' x 2' Stucco Pro Revealed Edge Black	770-07 (12 per case)	23 3/4" x 23 3/4" x 5/32"
Revealed Edge Border Trim Kit White	700-99 (25-pcs)	23 3/16" x 1/3" x 5/8"
Revealed Edge Border Trim Kit Black	701-99 (25-pcs)	23 3/16" x 1/3" x 5/8"
Hold-Down Clip (Black)	799-00 (50 per box)	--

Designer Series

2' x 2' Drifts White	751-00 (12 per case)	23 3/4" x 23 3/4" x 1/10"
2' x 2' Drifts Black	751-07 (12 per case)	23 3/4" x 23 3/4" x 1/10"
2' x 2' Antique White	752-00 (12 per case)	23 3/4" x 23 3/4" x 1/10"
2' x 2' Antique Black	752-07 (12 per case)	23 3/4" x 23 3/4" x 1/10"
2' x 2' Icon Coffe White	753-00 (12 per case)	23 3/4" x 23 3/4" x 1/10"
2' x 2' Icon Coffe Black	753-07 (12 per case)	23 3/4" x 23 3/4" x 1/10"
2' x 2' Icon Relief White	754-00 (12 per case)	23 3/4" x 23 3/4" x 1/10"
2' x 2' Icon Relief Black	754-07 (12 per case)	23 3/4" x 23 3/4" x 1/10"
2' x 2' Border Fill Tile*	756-00 (12 per case)	23 3/4" x 23 3/4" x 1/10"

* available in White only

Surface Burning Characteristics

ASTM E 84 Class "A" Fire Rated — Flame and Smoke

Safety

FDA, USDA & CFIA-approved for food manufacturing/processing

Durability

Resists rust, corrosion, water, mold, mildew, bacteria

Material

White, virgin-grade PVC vinyl

Compatibility

Works with most standard 1/16" grid systems

Warranty

25-year limited warrant

Standard Ratings



Light Reflectivity



Acoustic Quality



Impact Resistance

Green Specs



Recycled Content



VOC Class

Key Features



Mold & Mildew Resistant



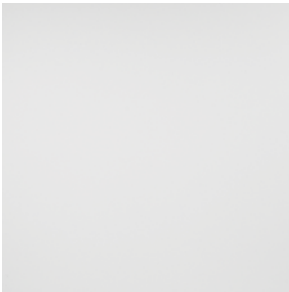
Humidity Resistant



Fire Resistant



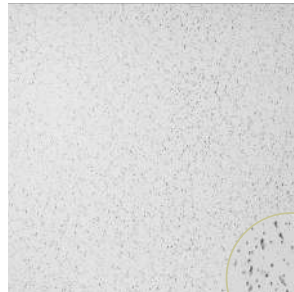
Standard Series



Smooth Pro White



Smooth Pro Black



Printed Pro



Stucco Pro White



Stucco Pro Black



Stucco Pro Revealed Edge White



Stucco Pro Revealed Edge Black



Revealed Edge 25-pc Border Trim Kit



Hold-Down Clip



Drifts White



Icon Coffer Black

Designer Series



Antique White



Antique Black



Drifts White



Drifts Black



Icon Coffer White



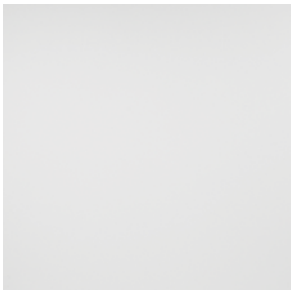
Icon Coffer Black



Icon Relief White



Icon Relief Black



**Designer Series
Border Fill Tile**



GridMAX® Ceiling Grid Covers

GridMAX is the low-cost alternative to replacing or repainting deteriorated, rusted or stained metal grid. These high-grade vinyl covers easily install over existing metal grid, changing the look of a room at a fraction of the cost of other refurbishment solutions, while eliminating costly downtime for demolition and replacement.

GridMAX components are factory-cut to fit over standard 2' x 2' or 2' x 4' ceiling grid systems. Main covers are pre-notched to provide seamless transitions at each cross tee intersection. GridMAX ceiling grid covers will not rust or show scratches and are available in a wide range of colors and finishes.



	Item #	Dimensions
4' Main Cover (15/16")	210-XX	48" x 1" x 1/8"
4' Main Cover (1")	212-XX	48" x 1 1/8" x 1/8"
2' Tee Cover (15/16")	220-XX	23" x 1" x 1/8"
2' Tee Cover (1")	222-XX	23" x 1 1/8" x 1/8"
4' Tee Cover (15/16")	230-XX	47" x 1" x 1/8"
4' Tee Cover (1")	232-XX	47" x 1 1/8" x 1/8"
4' Wall Molding Cover	250-XX	48" x 1" x 1/8"

For "XX"—White: "00" | Black: "07" | Other colors also available

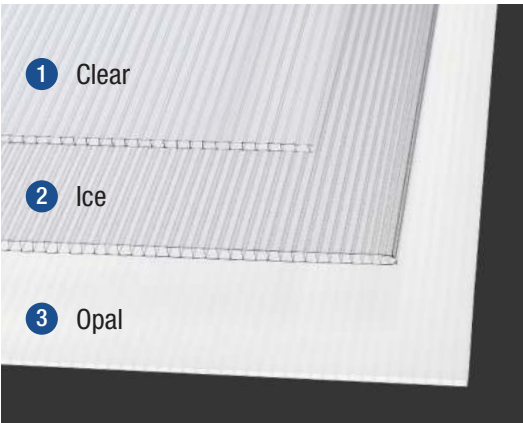
Note: Revealed-edge tiles require minimum of 3/8" lip for proper fit with GridMAX grid covers



Genesis™ Light Panels

Genesis Light Panels are manufactured from highly-durable, lightweight polycarbonate. Each panel is waterproof, washable and is easily cut with a scissors or utility knife, providing a versatile, long-term solution for ceiling grid lighting systems.

- Superior UV stability—resists yellowing
- Will not spot, stain, rot, swell or peel due to moisture
- Impact-resistant
- Installs in any existing or new grid system
- 10-year shatterproof warranty



	Item #	Dimensions
Clear 2' x 4'	708-00	23.75" x 47.75" x 6 mm
Ice 2' x 4'	708-01	23.75" x 47.75" x 6 mm
Opal 2' x 4'	708-02	23.75" x 47.75" x 6 mm