

VA



Trusted by Healthcare Professionals Globally

Purchased by Hospitals, Nursing Homes, Homecare, DME,
Schools, Sports Medicine and many more!

Special VA Price

New Era PVC is infused with antibacterial agents!

Buying from our PVC DME competitors?

- Products are overpriced
- High freight fees due to bulky designs

1. Proprietary Technology Patent US NO 11529023
2. Best, lowest prices in the healthcare industry with the highest quality
3. New Era Infection Control line saves 30%-50% freight compared to our competitors bulky design and packages
4. Trusted by Healthcare Professionals Globally

MADE IN THE



Why Mor-Medical?

Being a frequent caregiver of his mother who was a bi-lateral amputee for most of her adult life (55 years) allowed Gilbert to witness the highs and lows of her everyday life. His team's empathy for others strengthened their conviction that they could make a positive difference in people's lives.

“Developing and designing medical equipment comes from the heart.”—*Gilbert Morales*

“PEOPLE MATTER”

By bringing proprietary technology into the healthcare market, end users can live with maximum care – lowest cost and ease of functionality. Every product brought to market has more benefits and improves individual's lives.

Their patented product lines provide the market innovation and cost savings on everything from the product to the shipment.

Be part of the change—choose Mor-Medical, your best option for medical equipment designed with people's needs in mind.

Contact your distributor and become part of the change!



Mor-Medical International Shower Chairs

Mor-Medical's **Exclusive Infection Control Patented Design** is
Trusted by Healthcare Professionals Globally!

All our products are manufactured with the same streamline design and
are secured with stainless steel bolts – **NO PVC FITTINGS**

Traditional PVC Shower Chair **Fittings** have a greater probability of **breaking**
and are difficult to replace in the field.



NEW ERA DESIGN PVC HEALTHCARE PRODUCTS

Durable Soft Touch ERGO Vinyl Strap Back allows
for easier disinfection between uses. No PVC
fittings!

Available with Open Front Soft Seat or Hard Seat

Available with or without Commode Pail

Deluxe 3" All Locking Twin Casters

New Era Design Shower Chairs are packaged in convenient, smaller boxes to **save on freight**
costs compared to traditional boxes. The chair can be **assembled within 10 minutes**.

NEW ERA Infection Control Patented Design Shower Commode Chairs



DNE-310-3TWL-NC



DNE-310HS-3TWL-NC



DNE-310-3TWL-NC-MVM



DNE-310-3TWL

Standard Features:

- Soft Touch Easy Disinfect Vinyl Strap Back or Traditional Mesh Back
- Removable Open Front Seat—Soft Seat or Hard Seat
- 3” Twin All Locking Casters

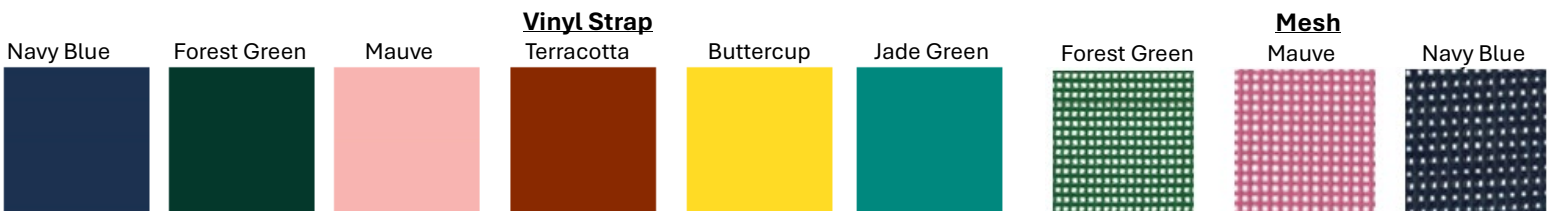
Available In:

- 18” Internal Width—310 lbs. wt. capacity
- 22” Internal Width—385 lbs. wt. capacity
- 26” Internal Width—435 lbs. wt. capacity

| Model No. | Internal Width | External Width | Weight Capacity | Price | Feature | Additional Info. |
|---------------------|----------------|----------------|-----------------|-------|---|------------------|
| DNE-310-3TWL-NC | 18” | 21.5” | 310 lbs. | TBD | Soft Seat with Center Section—NO Commode Pail | |
| DNE-310HS-3TWL-NC | 18” | 21.5” | 310 lbs. | TBD | Hard Seat—NO Commode Pail | |
| DNE-310-3TWL-NC-MVM | 18” | 21.5” | 310 lbs. | TBD | Soft Seat with Center Section—NO Commode Pail | |
| DNE-310-3TWL | 18” | 21.5” | 310 lbs. | TBD | Soft Seat with Center Section—with Commode Pail | |

Available Colors

Specify color and material on order



NEW ERA Infection Control Patented Design Shower Commode Chairs



DNE-310-3TWL-DDA



DNE-310-3TWL-FF



DNE-310-3TWL-FF-DDA



DNE-310-3TWL-UC-BC

Standard Features:

- Soft Touch Easy Disinfect Vinyl Strap Back or Traditional Mesh Back
- Removable Open Front Seat—Soft Seat or Hard Seat
- 3” Twin All Locking Casters

Available In:

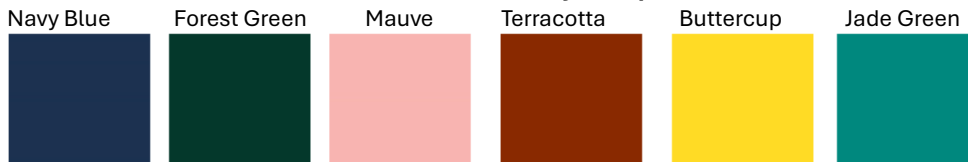
- 18” Internal Width—310 lbs. wt. capacity
- 22” Internal Width—385 lbs. wt. capacity
- 26” Internal Width—435 lbs. wt. capacity

| Model No. | Internal Width | External Width | Weight Capacity | Price | Feature | Additional Information |
|---------------------|----------------|----------------|-----------------|-------|--|------------------------|
| DNE-310-3TWL-DDA | 22” | 25.5” | 310 lbs. | TBD | Soft Seat & Center Section—Commode Pail & Drop Arms | |
| DNE-310-3TWL-FF | 18” | 21.5” | 310 lbs. | TBD | Soft Seat & Center Section—Commode Pail & Soft Touch Folding Footrest | |
| DNE-310-3TWL-FF-DDA | 22” | 25.5” | 310 lbs. | TBD | Soft Seat & Center Section—Commode Pail, Soft Touch Folding Footrest & Drop Arms | |
| DNE-310-3TWL-UC-BC | 18” | 21.5” | 310 lbs. | TBD | Utility Chair with Soft Seat Vinyl Strap Seat—Buttercup | |

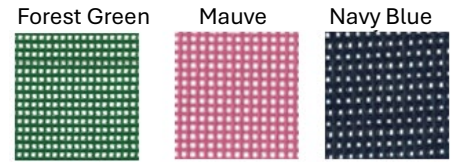
Available Colors

Specify color and material on order

Vinyl Strap



Mesh



NEW ERA Infection Control Patented Design Bariatric Shower Commode Chairs



DNE-610-4L-BAR



DNE-610-4L-BAR-FF



DNE-710-4L

Standard Features:

- Soft Touch Easy Disinfect Vinyl Strap Back
- Removable Open Front Soft Seat
- 4” Single Wheel All Locking Casters

Available In:

- 26” Internal Width—610 lbs. wt. capacity
- 30” Internal Width—710 lbs. wt. capacity
- 30” Internal Width—910 lbs. wt. capacity

| Model No. | Internal Width | External Width | Weight Capacity | Price | Feature | Additional Information |
|-------------------|----------------|----------------|-----------------|-------|---|------------------------|
| DNE-610-4L-BAR | 26” | 29” | 610 lbs. | TBD | Soft Seat with Center Section—with Commode Pail | |
| DNE-610-4L-BAR-FF | 26” | 29” | 610 lbs. | TBD | Soft Seat with Center Section—with Commode Pail & Soft Touch Folding Footrest | |
| DNE-710-4L | 30” | 33” | 710 lbs. | TBD | Soft Seat with Center Section—with Commode Pail | |

Available Colors
Specify color on order

Vinyl Strap



NEW ERA Infection Control Patented Design Bariatric Shower Commode Chairs



DNE-710-4L-DDA



DNE-710-4L-FF



DNE-910-4L-FF

Standard Features:

- Soft Touch Easy Disinfect Vinyl Strap Back & Footrest
- Removable Open Front Soft Seat
- 4” Single Wheel All Locking Casters

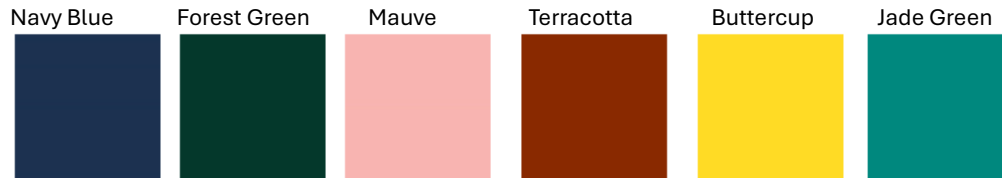
Available In:

- 26” Internal Width—610 lbs. wt. capacity
- 30” Internal Width—710 lbs. wt. capacity
- 30” Internal Width—910 lbs. wt. capacity

| Model No. | Internal Width | External Width | Weight Capacity | Price | Feature | Additional Information |
|----------------|----------------|----------------|-----------------|-------|---|------------------------|
| DNE-710-4L-DDA | 34” | 37.5” | 710 lbs. | TBD | Soft Seat with Center Section—with Commode Pail & Double Drop Arms | |
| DNE-710-4L-FF | 30” | 33” | 710 lbs. | TBD | Soft Seat with Center Section—with Commode Pail & Soft Touch Folding Footrest | |
| DNE-910-4L-FF | 30” | 33” | 910 lbs. | TBD | Soft Seat with Center Section—with Commode Pail & Soft Touch Folding Footrest | |

Available Colors
Specify color on order

Vinyl Strap



NEW ERA Infection Control Patented Design Reclining Shower Chairs



DNE-REC-335-PAD



DNE-REC-335-LR



DNE-REC-335-FF-LR-PAIL

Standard Features:

- Soft Touch Easy Disinfect Vinyl Strap Back, Footrest & Legrest
- Removable Open Front Seat—Soft Seat or Hard Seat
- 3” Twin All Locking Casters for Standard Reclining Chairs
- 4” Single Wheel All Locking Casters for Bariatric Reclining Chairs

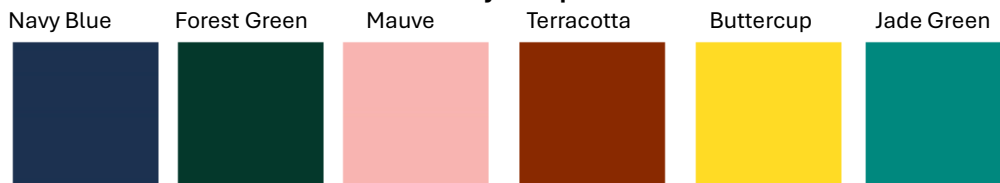
Available In:

- 20” Internal Width—335 lbs. wt. capacity
- 26” Internal Width—610 lbs. wt. capacity
- 30” Internal Width—710 lbs. wt. capacity

| Model No. | Internal Width | External Width | Weight Capacity | Price | Feature | Additional Information |
|------------------------|----------------|----------------|-----------------|-------|--|------------------------|
| DNE-REC-335-PAD | 20” | 24” | 335 lbs. | TBD | Soft Seat & Center Section—Padded Back, Legrest, NO Commode Pail | |
| DNE-REC-335-LR | 20” | 24” | 335 lbs. | TBD | Soft Seat & Center Section—Soft Touch Legrest, NO Commode Pail | |
| DNE-REC-335-FF-LR-PAIL | 20” | 24” | 335 lbs. | TBD | Soft Seat & Center Section—Soft Touch Folding Footrest, Legrest & Commode Pail | |

Available Colors
Specify color on order

Vinyl Strap



NEW ERA Infection Control Patented Design Reclining & Tilt N Space Shower Chair



DNE-REC-335-FF-PAIL



DNE-TIS-260

Standard Features:

- Soft Touch Easy Disinfect Vinyl Strap Back, Footrest & Legrest
- Removable Open Front Seat—Soft Seat or Hard Seat
- 3” Twin All Locking Casters

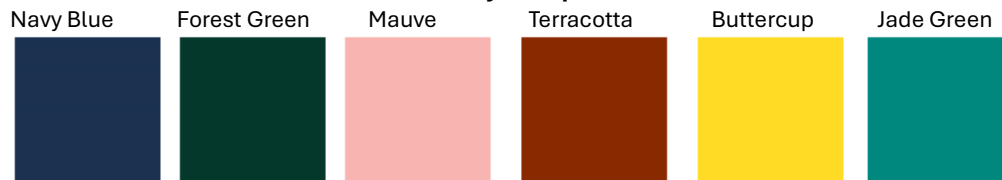
Available In:

- 18” Internal Width—260 lbs. wt. capacity
- 20” Internal Width—335 lbs. wt. capacity

| Model No. | Internal Width | External Width | Weight Capacity | Price | Feature | Additional Information |
|---------------------|----------------|----------------|-----------------|-------|--|------------------------|
| DNE-REC-335-FF-PAIL | 20” | 24” | 335 lbs. | TBD | Soft Seat & Center Section— Commode Pail & Soft Touch Folding Footrest | |
| DNE-TIS-260 | 18” | 21.5” | 260 lbs. | TBD | Soft Seat & Center Section— NO Commode Pail & Soft Touch Legrest | |

Available Colors
Specify color on order

Vinyl Strap



NEW ERA Infection Control Patented Design Bariatric Reclining Shower Chairs



DNE-REC-610BAR-FF-LR-PAIL



DNE-REC-710-FF-LR-PAIL

Standard Features:

- Soft Touch Easy Disinfect Vinyl Strap Back, Footrest & Legrest
- Removable Open Front Seat—Soft Seat or Hard Seat
- 4” Single Wheel All Locking Casters

Available In:

- 26” Internal Width—610 lbs. wt. capacity
- 30” Internal Width—710 lbs. wt. capacity

| Model No. | Internal Width | External Width | Weight Capacity | Price | Feature | Additional Information |
|---------------------------|----------------|----------------|-----------------|-------|---|------------------------|
| DNE-REC-610BAR-FF-LR-PAIL | 26” | 29.5” | 610 lbs. | TBD | Soft Seat & Center Section—with Padded Back, Legrest & Commode Pail | |
| DNE-REC-710-FF-LR-PAIL | 30” | 33.5” | 710 lbs. | TBD | Soft Seat & Center Section—with Padded Back, Legrest & Commode Pail | |

Available Colors
Specify color on order

Vinyl Strap

Navy Blue



Forest Green



Mauve



Terracotta



Buttercup



Jade Green



NEW ERA Infection Control Patented Design Hampers



DNE-SM-S-FP



DNE-SM-D-FP



DNE-SM-T-MVM

Standard Features:

- Zipper Opening Retaining Bags for Easier Access to Dirty Linens
- Wire Bag Holder for Use with Liner Bags
- 3” Twin All Locking Casters (Singles & Doubles)
- 4” Single Wheel All Locking Casters (Triples)

Available In:

- Small—Single, Double & Triple
- Large—Single, Double & Triple
- With and Without Foot Pedal
- Nylon, Solid Vinyl, or Mesh Retaining Bags

| Model No. | External Length | External Width | Price | Number of Bags | Bag Capacity | Feature | Additional Information |
|-------------|-----------------|----------------|-------|----------------|--------------|-----------------|------------------------|
| DNE-SM-S | 17.5” | 19” | TBD | 1 | 28 gal. ea. | No Foot Pedal | |
| DNE-SM-S-FP | 18” | 22.5” | TBD | 1 | 28 gal. ea. | With Foot Pedal | |
| DNE-SM-D | 33.5” | 19” | TBD | 2 | 28 gal. ea. | No Foot Pedal | |
| DNE-SM-D-FP | 34.25” | 22.5” | TBD | 2 | 28 gal. ea. | With Foot Pedal | |
| DNE-SM-T | 48.25” | 19” | TBD | 3 | 28 gal. ea. | No Foot Pedal | |
| DNE-SM-T-FP | 49” | 22.5” | TBD | 3 | 28 gal. ea. | With Foot Pedal | |

Available Colors

Specify color and material on order

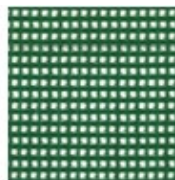
Mesh

Nylon

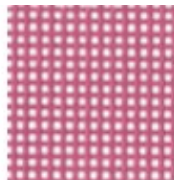
Navy Blue



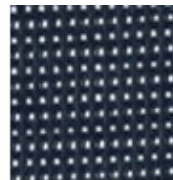
Forest Green



Mauve



Navy-Blue



Solid Vinyl

Gray



NEW ERA Infection Control Patented Design Hampers



DNE-LG-S-FP



DNE-LG-D-FP



DNE-LG-T-FGM

Standard Features:

- Zipper Opening Retaining Bags for Easier Access to Dirty Linens
- Wire Bag Holder for Use with Liner Bags
- 3” Twin All Locking Casters (Singles & Doubles)
- 4” Single Wheel All Locking Casters (Triples)

Available In:

- Small—Single, Double & Triple
- Large—Single, Double & Triple
- With and Without Foot Pedal
- Nylon, Solid Vinyl, or Mesh Retaining Bags

| Model No. | External Length | External Width | Price | Number of Bags | Bag Capacity | Feature | Additional Information |
|-------------|-----------------|----------------|-------|----------------|--------------|-----------------|------------------------|
| DNE-LG-S | 21.5” | 19” | TBD | 1 | 43 gal. ea. | No Foot Pedal | |
| DNE-LG-S-FP | 22” | 26.25” | TBD | 1 | 43 gal. ea. | With Foot Pedal | |
| DNE-LG-D | 41” | 19” | TBD | 2 | 43 gal. ea. | No Foot Pedal | |
| DNE-LG-D-FP | 42” | 26.25” | TBD | 2 | 43 gal. ea. | With Foot Pedal | |
| DNE-LG-T | 55.75” | 19” | TBD | 3 | 43 gal. ea. | No Foot Pedal | |
| DNE-LG-T-FP | 56.75” | 26.25” | TBD | 3 | 43 gal. ea. | With Foot Pedal | |

Available Colors

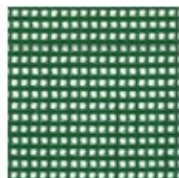
Specify color and material on order

Nylon

Navy Blue

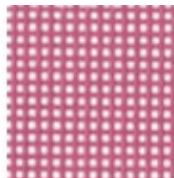


Forest Green

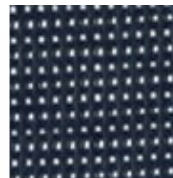


Mesh

Mauve



Navy Blue



Solid Vinyl

Gray



**NEW ERA Infection Control Patented Design
Linen Carts – SUPER LIGHT and EXTREMELY Durable**



DNE-SM-3C



DNE-SM-24-3C



DNE-MED-3C

Standard Features:

- Front Cover Opening Easier Access to Linens
- 4 oz., 210 Denier Nylon Cover and Shelving
- Anti-Microbial Resistance
- 3" Twin Wheel All Locking Casters

Available In:

- 2 Nylon Material Shelves
- 3 Nylon Material Shelves
- 4 Nylon Material Shelves
- Nylon, Solid Vinyl, or Mesh Cover

| Model No. | External Length | External Width | Height (with casters) | Price | Shelf Capacity | Feature | Additional Information |
|--------------|-----------------|----------------|-----------------------|-------|----------------|---------------------|------------------------|
| DNE-SM-2C | 27" | 20" | 35" | TBD | 75 lbs. per | 2—20" x 25" Shelves | |
| DNE-SM-3C | 27" | 20" | 49" | TBD | 75 lbs. per | 3—20" x 25" Shelves | |
| DNE-SM-4C | 27" | 20" | 63" | TBD | 75 lbs. per | 4—20" x 25" Shelves | |
| DNE-SM-24-3C | 27" | 24" | 49" | TBD | 75 lbs. per | 3—24" x 25" Shelves | |
| DNE-MED-2C | 36" | 20" | 35" | TBD | 75 lbs. per | 2—20" x 32" Shelves | |
| DNE-MED-3C | 36" | 20" | 49" | TBD | 75 lbs. per | 3—20" x 32" Shelves | |
| DNE-MED-4C | 36" | 20" | 63" | TBD | 75 lbs. per | 4—20" x 32" Shelves | |

Available Colors

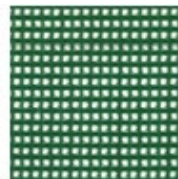
Specify color and material on order

Nylon

Navy Blue

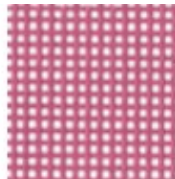


Forest Green

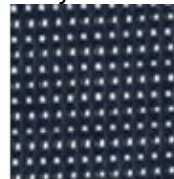


Mesh

Mauve



Navy Blue



Solid Vinyl

Gray



**NEW ERA Infection Control Patented Design
Linen Carts - SUPER LIGHT and EXTREMELY Durable**



DNE-LG-3C



DNE-XLG-3C

Standard Features:

- Front Cover Opening Easier Access to Linens
- 4 oz., 210 Denier Nylon Cover and Shelving
- Anti-Microbial Resistance
- 4” Single Wheel All Locking Casters

Available In:

- 2 Nylon Material Shelves
- 3 Nylon Material Shelves
- 4 Nylon Material Shelves
- Nylon, Solid Vinyl, or Mesh Cover

| Model No. | External Length | External Width | Height (with casters) | Price | Shelf Capacity | Feature | Additional Information |
|------------|-----------------|----------------|-----------------------|-------|----------------|---------------------|------------------------|
| DNE-LG-2C | 47” | 20” | 45.5” | TBD | 100 lbs. per | 2—20” x 45” Shelves | |
| DNE-LG-3C | 47” | 20” | 64” | TBD | 100 lbs. per | 3—20” x 45” Shelves | |
| DNE-LG-4C | 47” | 20” | 75” | TBD | 100 lbs. per | 4—20” x 45” Shelves | |
| DNE-XLG-2C | 54” | 20” | 45”5” | TBD | 150 lbs. per | 2—20” x 50” Shelves | |
| DNE-XLG-3C | 54” | 20” | 64” | TBD | 150 lbs. per | 3—20” x 50” Shelves | |
| DNE-XLG-4C | 54” | 20” | 75” | TBD | 150 lbs. per | 4—20” x 50” Shelves | |

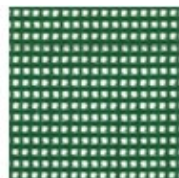
Available Colors
Specify color and material on order

Nylon

Navy Blue

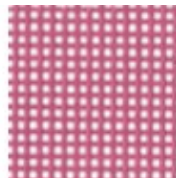


Forest Green



Mesh

Mauve



Navy Blue



Solid Vinyl

Gray



NEW ERA Infection Control Patented Design Premium Linen Carts – Height Adjustable Shelves



DNE-MED-3C-HS-H-ADJ-MVM
Nylon Shelf, Handles, Mauve Mesh Cover



DNE-LG-3C-HS-H-ADJ-NBM
Hard Shelf, Handles, Navy Blue Mesh Cover

Standard Features:

- Front Cover Opening Easier Access to Linens
- Height Adjustable Hard Shelving or 4 oz., 210 Denier Nylon Shelving
- Comfort Design Vertical Push / Pull Handles
- 4" Single Wheel All Locking Casters

Available In:

- 6—Height Adjustments
- Small, Medium, Large and XLarge Carts
- 3 Shelf Carts Only
- Nylon, Solid Vinyl, or Mesh Cover

| Model No. | External Length | External Width | Height with casters | Price | Shelf Capacity | Feature | Additional Information |
|----------------------|-----------------|----------------|---------------------|-------|----------------|---------------------|------------------------|
| DNE-SM-3C-HS-H-ADJ | 27" | 20" | 49" | TBD | 75 lbs. per | 3—20" x 25" Shelves | |
| DNE-SM-3C-H-ADJ | 27" | 20" | 49" | TBD | 75 lbs. per | 3—20" x 25" Shelves | |
| DNE-MED-3C-HS-H-ADJ | 36" | 20" | 49" | TBD | 75 lbs. per | 3—20" x 32" Shelves | |
| DNE-MED-3C-H-ADJ | 36" | 20" | 49" | TBD | 75 lbs. per | 3—20" x 32" Shelves | |
| DNE-LG-3C-HS-H-ADJ | 47" | 20" | 64" | TBD | 100 lbs. per | 3—20" x 45" Shelves | |
| DNE-LG-3C-H-ADJ | 47" | 20" | 64" | TBD | 100 lbs. per | 3—20" x 45" Shelves | |
| DNE-XLG-3C-HS-H-ADJ* | 54" | 20" | 64" | TBD | 150 lbs. per | 3—20" x 50" Shelves | |
| DNE-XLG-3C-H-ADJ | 54" | 20" | 64" | TBD | 150 lbs. per | 3—20" x 50" Shelves | |

*Product requires shipping quote, call for rate.

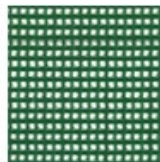
Available Colors

Specify color and material on order

Nylon
Navy Blue

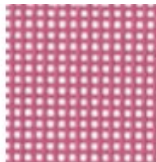


Forest Green

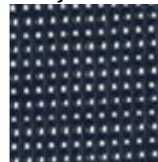


Mesh

Mauve



Navy Blue



Solid Vinyl

Gray



NEW ERA Infection Control Patented Design Specialty Carts—Isolation Station



Standard Features:

- 3 Slide Out Spacious Drawers
- 2 Mounting Boards, 6” x 11”
- Wrap Around Panel / Skirt
- 3” Twin All Locking Casters

Available In:

- Nylon, Solid Vinyl, or Mesh Panel / Skirt
- Drawer Color May Vary

| Model No. | External Length | External Width | Total Height | Price | Top Shelf | Feature | Additional Information |
|----------------|-----------------|----------------|--------------|-------|--------------|--------------|------------------------|
| DNE-ISO-3D* | 26” | 15” | 45” | TBD | 22” x 13.75” | Easy Storage | |
| DNE-ISO-3D-YV* | 26” | 15” | 45” | TBD | 22” x 13.75” | Easy Storage | |

*Product requires shipping quote, call for rate.

Available Colors

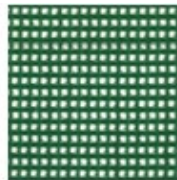
Specify color and material on order

Nylon

Navy Blue

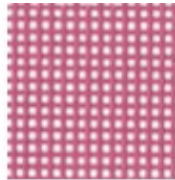


Forest Green



Mesh

Mauve



Navy Blue



Solid Vinyl

Gray



Yellow



NEW ERA Infection Control Patented Design Specialty Cart—Emergency Crash Cart



DNE-CCRT-10

DNE-CCRT-HC



DNE-CPR-B



DNE-CPR-BAG



DNE-CCRT-SP



DNE-CCRT-TC10



Standard Features:

- 3 Slide Out Drawers
- O2 Holder
- 3" Twin All Locking Casters

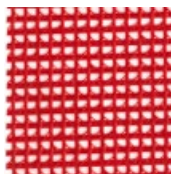
Available In:

- Red Mesh for Covers

| Model No. | External Length | External Width | Height (with casters) | Price | Shelf Capacity | Feature | Additional Information |
|---------------|-----------------|----------------|-----------------------|-------|----------------|-------------------------|------------------------|
| DNE-CCRT-10 | 27" | 19" | 29" | TBD | 50 lbs. | Cart, CPR Board and Bag | |
| DNE-CPR-B | | | | TBD | | 20" x 20" | |
| DNE-CPR-BAG | | | | TBD | | Strong Durable Mesh | |
| DNE-CCRT-HC | | | | TBD | | Conceals Top Shelf | |
| DNE-CCRT-SP | | | | TBD | | Conceals Bottom Frame | |
| DNE-CCRT-TC10 | | | | TBD | | Conceals Entire Frame | |

Available Colors

Mesh
Red



NEW ERA Infection Control Patented Design Specialty Carts—Hydration Carts



DNE-HC-05



DNE-HC-10



DNE-HC-30

Standard Features:

- Water Resistant Interior Collapsible Ice Chest
- 5 Gal.—Collapsible Water Jug
- 4 oz., 210 Denier Nylon Panels / Skirt
- 3” Twin Wheel All Locking Casters

Available In:

- Nylon, Solid Vinyl, or Mesh Panels / Skirt
- Ice Chest Color May Vary

| Model No. | External Length | External Width | Height (with casters) | Price | Shelf Size | Feature | Additional Information |
|-----------|-----------------|----------------|-----------------------|-------|--------------------|----------------------|------------------------|
| DNE-HC-05 | 26” | 24” | 41” | TBD | 25.5” L x 23.5” W | Includes Scoop & Bag | |
| DNE-HC-10 | 26” | 24” | 41” | TBD | 25.5” L x 23.5” W | Includes Scoop & Bag | |
| DNE-HC-30 | 46” | 17” | 37” | TBD | 24.5” L x 13.25” W | Includes Scoop & Bag | |

Available Colors

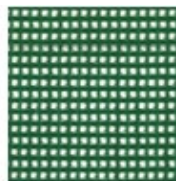
Specify color and material on order

Nylon

Navy Blue

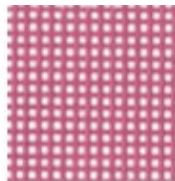


Forest Green



Mesh

Mauve



Navy Blue



Solid Vinyl

Gray



NEW ERA Infection Control Patented Design Shower Gurneys



Standard Features:

- Soft Touch Easy Disinfect Vinyl Strap—No Pad Required
- Reclining Head Section
- Drop Down Safety Rails
- Drain Pan & Drain Hose—Drain Pan Color May Vary
- 4” Single Wheel All Locking Casters

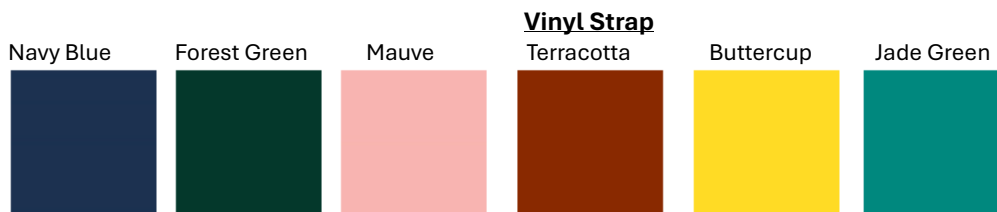
Available In:

- 450 lbs. weight capacity
- 610 lbs. weight capacity
- 910 lbs. weight capacity

| Model No. | External Length | External Width | Height (to laying surface) | Price | Weight Capacity | Feature | Additional Information |
|---------------|-----------------|----------------|----------------------------|-------|-----------------|-----------|------------------------|
| DNE-SG10* | 79.5” | 28” | 27” | TBD | 450 lbs. | SEE ABOVE | |
| DNE-SG10-610* | 79.5” | 32” | 27” | TBD | 610 lbs. | SEE ABOVE | |
| DNE-SG10-910* | 79.5” | 36” | 28” | TBD | 910 lbs. | SEE ABOVE | |

*Product requires shipping quote, call for rate.

Available Colors
Specify color on order



NEW ERA Infection Control Patented Design Privacy Screens



DNE-1P-PS



DNE-3P-PS



DNE-3P-PS-3TWL

Standard Features:

- 4 oz., 210 Denier Nylon Panel(s)
- 3 Panel Screens are Foldable for Easy Storage
- 3” Twin Wheel All Locking Casters

Available In:

- Nylon or Solid Vinyl

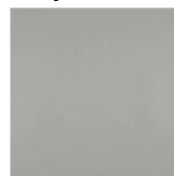
| Model No. | External Length | Total Height | Price | Panel Size | Feature | Additional Information |
|----------------|-----------------|--------------|-------|-------------------|-----------------------------|------------------------|
| DNE-1P-PS | 65” | 70” | TBD | 65” L x 70” H | Light Weight, User-Friendly | |
| DNE-3P-PS | 63.5” | 63” | TBD | 21” L x 53” H ea. | Light Weight, User-Friendly | |
| DNE-3P-PS-3TWL | 63.5” | 72.5” | TBD | 21” L x 53” H ea. | Light Weight, User-Friendly | |

Available Colors
 Specify color on order

Nylon
 Navy Blue



Solid Vinyl
 Gray



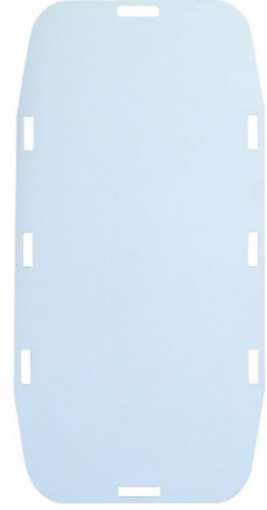
NEW ERA Infection Control Patented Design Transfer Boards



DNE-TB-HALF



DNE-TB-STD



DNE-TB-WIDE

Standard Features:

- High Density Polyethylene
- Handles for Easy Patient Transfer

Available In:

- Half Size
- Standard Size
- Wide Size

| Model No. | External Length | External Width | Price | Weight Tolerance | Feature | Additional Information |
|--------------|-----------------|----------------|-------|------------------|-----------|------------------------|
| DNE-TB-HALF | 31" | 23" | TBD | 440 lbs. | SEE ABOVE | |
| DNE-TB-STD | 71" | 23" | TBD | 660 lbs. | SEE ABOVE | |
| DNE-TB-WIDE* | 71" | 35.5" | TBD | 770 lbs. | SEE ABOVE | |

*Product requires shipping quote, call for rate.

NEW ERA Infection Control Patented Design Rehab Ball Racks



DNE-7WM



DNE-7SR-2

Standard Features:

- New Era PVC is infused with antibacterial agents

Available In:

- Wall Mount
- Stationary 2 Tier

| Model No. | External Length | External Width | Height | Price | Feature | Additional Information |
|-----------|-----------------|----------------|--------|-------|-----------|------------------------|
| DNE-7WM | 58" | 17" | 1.75" | TBD | SEE ABOVE | |
| DNE-7SR-2 | 62.5" | 19" | 34" | TBD | SEE ABOVE | |
| | | | | | | |

Maximus Strength Trainer Pro



MSTP-E



MSTP-C



MSTP-RT

Standard Features:

- Frame and Resistance Tubes Combine for up to 264 Variable Resistance Angles
- Shoe Plate with 3—Adjustable Straps with Side Release Buckles to Secure the Foot
- Suction Cups for Floor Models
- 4 Levels of Resistance Tubes

Available For Additional Purchase:

- Level 2-Red Resistance Tube(s)
- Level 3-Green Resistance Tube(s)
- Level 5-Black Resistance Tube(s)
- Level 6-Silver Resistance Tube(s)

| Model No. | External Length | External Width | Height (Front) | Height (Back) | Price | Feature | Additional Information |
|-----------|-----------------|----------------|----------------|---------------|-------|-----------|------------------------|
| MSTP-C | 23" | 27.75" | 11" | 18" | TBD | SEE ABOVE | |
| MSTP-E | 23" | 27.75" | 11" | 18" | TBD | SEE ABOVE | |
| MSTP-RT | 16" | 27.75" | 25" | 22.5' | TBD | SEE ABOVE | |

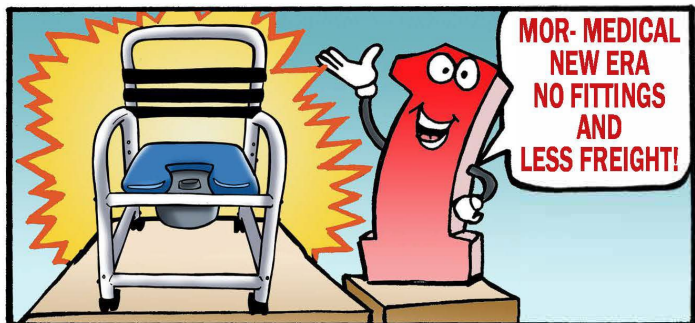
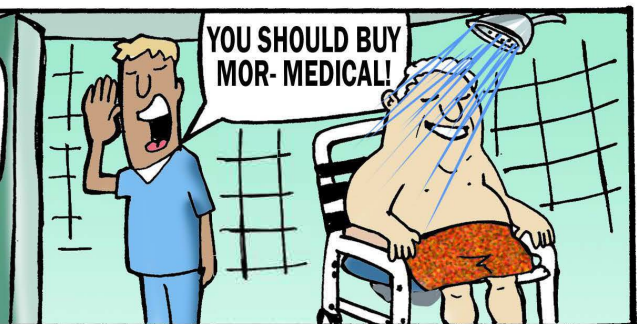
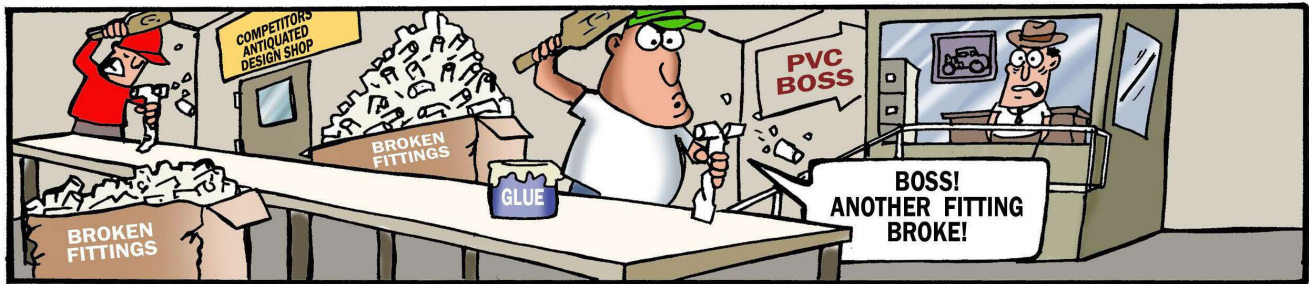
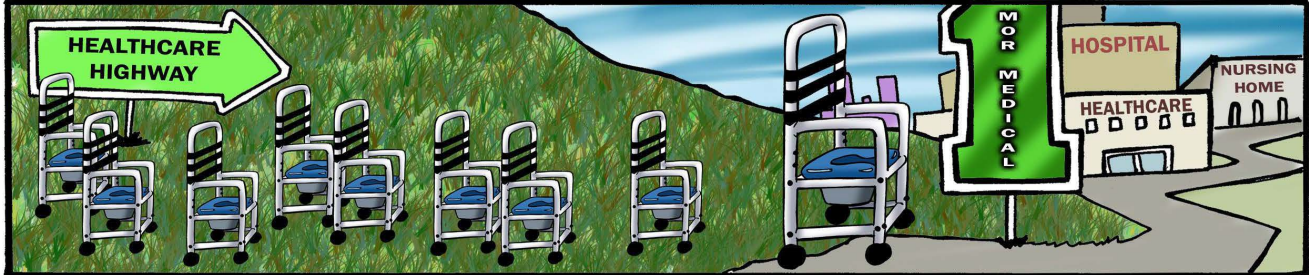
Mor-Medical International

People Matter™

PATENT NO. 11529023

info@mormedicalintl.com

PATENT NO. 11529023



Replacement Cart Cover Specification Sheet

A. Cart Length (External):

Measure from cart from left to right _____ inches
(Not including handle, if any)

B. Cart Width (External):

Measure from front to back of cart _____ inches

C. Cart Height:

Measure from top corner of cart to bottom of bottom shelf _____ inches
(Not including casters)



Additional Questions

1. PVC or Metal Cart _____
2. Flap opening on one side or both sides _____
3. Flap closure Velcro or zipper _____
4. Handle or no handle on cart _____
5. If handle, 1 or 2 _____
6. When facing front of cart, is handle(s) on left or right side _____

If handle(s) on cart answer the following:

- D. Measure from top corner of cart to top of handle _____ inches
- E. Measure from bottom of handle to bottom of bottom shelf _____ inches
(Not including casters)
- F. Measure width / thickness of handle _____ inches



Horizontal Handle

Vertical Handles

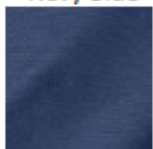
Please Note:

Sum of all 3 handle measurements should be equal to height of cart provided on C.

Color Availability

Nylon

Navy Blue

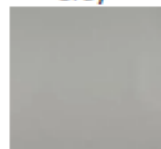


Solid Vinyl

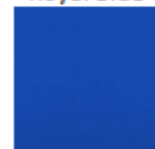
Yellow



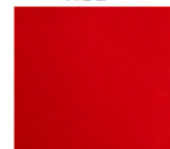
Gray



Royal Blue

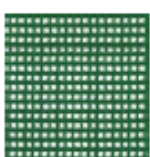


Red

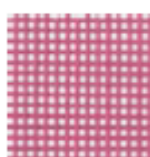


Mesh

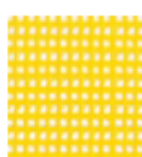
Forest Green



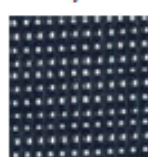
Mauve



Yellow



Navy Blue



Terms and Conditions

Pricing:

Prices are current as of the date on publication. Prices and availability are subject to change may occur due to taxes, tariffs, government action, raw material costs, manufacturer expenses, costs occasioned by local laws and codes, bonds, insurance, or other reasons.

Taxes are applicable unless Tax Exempt and documentation is provided.

Payment:

Payment terms are 2% 10 / Net 30 from date of invoice. A 1.5 % monthly finance charge may be applied on late payments.

Shipping:

FOB

Warranty:

Items Manufactured by Mor-Medical

Mor-Medical warrants the original purchaser of our PVC product line with a limited lifetime warranty from the date of our invoice against any defects in workmanship, functionality, and material integrity. Lifetime means the ordinary expected life of the product equating to 5 years.

Any product that shows expected wear under ordinary use is not considered to be defective.

Non-durable components such as casters, fabrics, seats, etc. which are subject to normal wear and tear have a 6-month warranty.

The limited lifetime warranty does not cover defects or malfunctions caused by misuse, improper installation, alteration, exposure to hazardous or corrosive chemicals, shipping damage, or other accident or casualty. The limited lifetime warranty is made only to the original purchaser and is not transferable.

Mor-Medical warrants only the parts of the product manufactured by it. Mor-Medical, at its discretion, will repair or replace product that fails as a result of defects in workmanship, functionality, and material integrity.

When requesting service under warranty, kindly have invoice/serial number and date on hand. If Mor-Medical requires inspection of item in question prior to service, customer agrees to ship item prepaid to Mor-Medical. If needed, repair or service will be done at no charge otherwise customer will be advised of charges to be incurred prior to service.

Please contact your distributor for product warranties.

VA



Terms and Conditions

Returns:

Mor- Medical is committed to our customers and their satisfaction with our product line and our service. With this in mind, we allow return requests to be made for the below with adherence to the return process.

- Distributor / Vendor / Customer order error
- Wrong item, color and/or material

****Note:** Custom Products are not accepted for return and any product requested for a return must be unused and in its original packaging. **

Return Request Process:

All items returned must have a return goods authorization (RGA #) from our customer service department.

1. Authorization for a return must be requested within 10 days of receiving shipment.
2. Customer must receive an RGA number before any product is returned. RGA number must be noted on packaging.
3. Customer agrees to pay 15 % restocking fee and the original shipping fees on all returned product(s). Customer is responsible for any fees to return product. Mor-Medical will not issue call tags for product returns.
4. Once an RGA has been received, product should be returned to:
Mor-Medical International
208 E Cano St
Edinburg, TX 78539
5. Customer has 30 days from date of authorization to have product received at our warehouse. If received after the 30 days, credit is denied.
6. Item must be new and unused, of the original design, and in the original packaging. Item must be disassembled and internally strapped as shipped. If the return package(s) is/are damaged, no credit will be issued.
7. Customer agrees to pay restocking fees once product is received and inspected. Example: Item received broken, missing parts, etc.
8. Mor- Medical is not responsible for loss or damages of returned product(s).

Please contact your distributor for product returns.



Terms and Conditions

Damaged Products:

Packaging will be reinforced at stress areas. Even under these conditions freight damage can and will occur. We will resolve issue with customer assistance when the following steps have been taken:

1. Inspect all freight for damage prior to acceptance of delivery.
2. Note any damage in writing or on the signed delivery receipt.
3. Report any damaged or missing items within 10 days of receiving shipment. No claim will be validated after 10 days.

Contact Mor-Medical's customer service to report and resolve your situation with the least expensive resolution which may be replacing product in part or whole whichever will provide the quickest replacement. Mor-Medical will assume no expense due to freight damage if report is made more than 10 days after shipment has been delivered.

Please contact your distributor to report damaged or missing items.

VA



VA



icdTM

INFECTION CONTROL DESIGN

New Era PVC is infused with antibacterial agents!

5. **Proprietary Technology Patent US NO 11529023**
6. **Best, lowest prices in the healthcare industry with the highest quality**
7. **New Era Infection Control line saves 30%-50% freight compared to our competitors bulky design and packages**
8. **Trusted by Healthcare Professionals Globally**