

# MEDIZIP



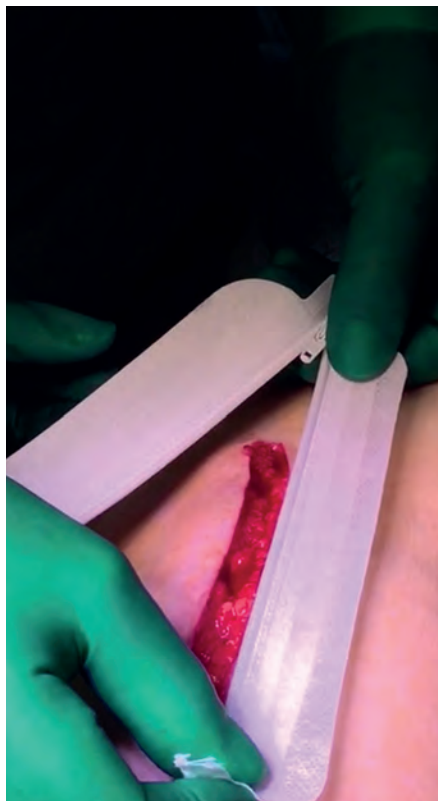
The **MEDIZIP** is a non-invasive wound closure method

# MEDIZIP

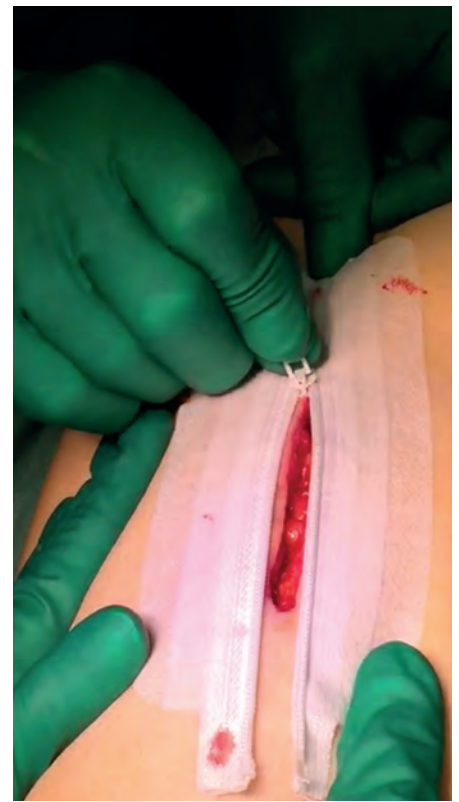
The **MEDIZIP** is a non-invasive wound closure method which was conceived by Prof. Dr. Kaeßmann. Suture channels and staple perforations can be dispensed with when the MEDIZIP is used in surgical procedures. On each side of the wound a medical zipper will be applied. A plaster, specially produced for this function, is the connection between the skin and the zipper. By closing the zipper the sides of the wound are merged together to ensure a perfect healing process.



The area surrounding the wound must be dry and cleaned of grease and exudate.



Place the adhesive side 2mm from edge of the wound and press on.



The wound is closed by using the **MEDIZIP** slider.

**MEDIZIP** can be overlapping to cover long wounds

**MEDIZIP** can be cut to any length required

# MEDIZIP



## **MEDIZIP – THE INGREDIENTS:**

Polyester, polyester fleece, polyacrylate adhesive, stainless steel, polyurethane, acrylate

## **MEDIZIP – THE SIZES:**

12cm x 6,2cm (max. length of wound 8cm)  
24cm x 6,2cm (max. length of wound 20cm)

## **MEDIZIP – THE PRODUCT CODE:**

**317100** for 12cm length

**317200** for 24cm length

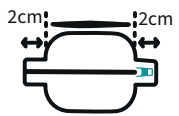
# MEDIZIP

## THE APPLICATION

### PREPARATION



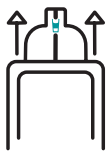
For deep incisions apply subcutaneous sutures as required before applying the MEDIZIP.



The MEDIZIP length must be a minimum of 4cm longer than the wound.



The area surrounding the wound must be dry and cleaned of grease and exudate.



Remove the MEDIZIP from the sterile packaging.



Separate the two sides of the MEDIZIP by sliding the rider to the open position. Then remove the paper from one side.



Place the adhesive side 2mm from the edge of the wound and press on.

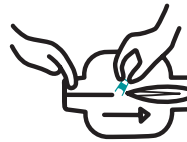


Remove the protective film from the other side and apply also 2mm from the edge of the wound.

### CLOSURE



The wound is closed by pushing the MEDIZIP slider. In order not to hinder the view of the wound pls. push the slider.



Hold the MEDIZIP at the end with one finger and slowly push up the MEDIZIP slider until the MEDIZIP is closed.



Apply protective dressing over the MEDIZIP if necessary.



7-10d

Leave the MEDIZIP in place for 7-10 days.

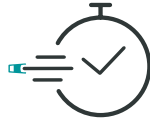


Remove the MEDIZIP in closed position.



### First Aid

MEDIZIP is very well suited for first aid kits



### Fast Application

MEDIZIP reduces operation time and anesthesia duration, no manual assistance or special instruments needed



### Little scar

MEDIZIP leaves little scar in comparison



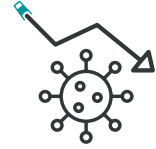
### Non invasive

MEDIZIP is a non invasive wound closer



### Easy Storage

MEDIZIP can easily be stored



### Reduced risk of infection

MEDIZIP significantly reduces risk of infection due to the elimination of retrograde infection routes e.g. suture channels



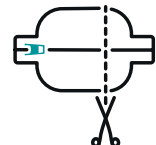
### No instruments required

MEDIZIP can be applied without instruments



### Flexible product

MEDIZIP can also be used for the closure of curved wounds



### Cut to length

MEDIZIP can be cut to virtually any length required



### Outdoor

MEDIZIP is suitable to be used during outdoor activities



7-10d

### Removal

MEDIZIP can be removed after 7- 10 days



### Emergency

MEDIZIP is very well suited for emergency treatments



### Short training

MEDIZIP has a very short learning phase for new users



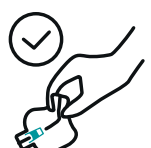
### Easy transport

MEDIZIP can easily be transported to its destination



### Easy to apply

MEDIZIP is very easy to apply.



### Easy to remove

MEDIZIP can easily be removed without the necessity for special instruments



### Comfort

MEDIZIP slider portion can be removed by cutting off the end stop, thus avoiding discomfort to the patient due to a feeling of pressure



### Military

MEDIZIP is suitable to be used by the military