

# Hausted<sup>®</sup>

by graham-field

## PATIENT HANDLING SOLUTIONS





Today's healthcare industry requires products and services that can deliver and manage the ever-changing challenges of patient demographics, increasing acuity, environmental conditions and economic influences.

Patient transport and positioning is a critical component in the treatment, recovery and satisfaction of patients. At Graham-Field, we are constantly evolving in our products and processes to provide our customers with the highest level of quality service - before and after the purchase.

Graham-Field offers specialized Hausted® patient handling solutions throughout the hospital, in outpatient centers and anywhere safe, streamlined patient transport and positioning is required. From Horizon™ Transport Stretchers with Retracto™ or AirGlide™ rail options to our Mobile Surgi-Chairs designed as a single patient platform from pre-op through post-op, we have the patient handling system right for your facility.

Customer satisfaction and quality are our Hausted tenets impacting the sales, service, development and manufacturing of our products. Dedicated and focused U.S. based research, engineering, testing, compliance and process control ensures safe and reliable solutions for our customers and their patients. All Hausted Stretchers and Chairs are manufactured in our U.S. ISO 13485 certified facilities, compliant with U.S. FDA Good Manufacturing Practices and are CE marked.

Patient and Staff safety are always paramount at Hausted. The demands being placed on your healthcare professionals are greater than ever - we understand these challenges. That is why we incorporate critical safety features that protect your patients and staff every day. Features that include:

- 3-position side rails that allow optimum patient access without compromising safety
- Brake and Steer pedals positioned to prevent awkward body movements
- Pneumatic Assist Back Rests for easy positioning of patients
- Center Track Steering for superb mobility and turning ease
- Range of weight capacities, up to 800 lb (363 kg) on select models, and patient surface widths to accommodate your larger patients

Our broad line of accessories allows you to customize your Hausted Stretcher or Surgi-Chair precisely for your facility or department needs.

Our commitment is to provide offerings that exceed your expectations in delivering an effective, safe and productive care environment and desired outcomes. We are available at +1-770-368-4700 to answer any questions or provide technical support so your satisfaction is as high after many years of use as it was on your first day.

## Mobile Surgi-Stretcher (Powered and Hydraulic)

The Powered and Hydraulic Mobile Surgi-Stretcher series is designed to be a single surgical platform for EYE, ENT and Plastic surgery procedures. The low-profile head design allows excellent site access for both superior and lateral procedures without compromising surgeon leg clearance.

- 720 lb (327 kg) Weight Capacity\* (5E8EYEST, 5D8EYEST, 5E8EYXST, 5D8EYXST models)
- Patented Articulating Headrest allows infinite and precise positioning of the head and neck
- Easy-to-use powered or hydraulic foot-end operated controls for height adjustment, backrest, leg section and Trendelenburg/Reverse Trendelenburg positioning
- Narrow width to facilitate steering and positioning during transport and surgery (5D8EYEST, 578EYEST)
- Emergency release for Quick Response positioning (powered models)
- Stainless Steel 3-Position Retracto™ Rails with Top Caps that eliminate patient transfer gap
- Multi-function Nurse Control (powered models)
- Brake and Steer controls accessible at all four corners
- Center Track Steering for superb mobility
- Battery backup (powered models)
- Comfort Mattress Pad

Models 5E8EYEST, 5D8EYEST, 5E8EYXST, 5D8EYXST, 578EYEST, 578EYXST

Head Articulation



Model	Standard Width 5E8EYEST 5D8EYEST+	Wide Width 5E8EYXST 5D8EYXST+	Standard Width 578EYEST	Wide Width 578EYXST
<b>Height Range: High</b>	30 in (76 cm)	30 in (76 cm)	32 in (81 cm)	32 in (81 cm)
<b>Height Range: Low</b>	22 in (56 cm)	22 in (56 cm)	24 in (61 cm)	24 in (61 cm)
<b>Overall Width</b>	29.75 in (76 cm)	34.5 in (88 cm)	29.75 in (76 cm)	34.5 in (88 cm)
<b>Overall Length</b>	88.5 in (225 cm)	88.5 in (225 cm)	88.5 in (225 cm)	88.5 in (225 cm)
<b>Patient Surface Width</b>	25 in (64 cm)	30 in (76 cm)	25 in (64 cm)	30 in (76 cm)
<b>Patient Surface Length</b>	81.5 in (207 cm)	81.5 in (207 cm)	81.5 in (207 cm)	81.5 in (207 cm)
<b>Backrest Degree of Movement</b>	0° - 80°	0° - 80°	0° - 90°	0° - 90°
<b>Knee Flex Degree of Movement</b>	0° - 60°	0° - 60°	0° - 75°	0° - 75°
<b>Trendelenburg/Reverse Trendelenburg</b>	10°	10°	16°	16°
<b>Retracto Rail Height</b>	14 in (36 cm)	14 in (36 cm)	14 in (36 cm)	14 in (36 cm)
<b>Retracto Rail Length</b>	49 in (125 cm)	49 in (125 cm)	49 in (125 cm)	49 in (125 cm)
<b>Casters</b>	8 in Tente® (20 cm)	8 in Tente (20 cm)	8 in Tente (20 cm)	8 in Tente (20 cm)
<b>Maximum Weight Capacity* (Evenly Distributed)</b>	720 lb (327 kg)	720 lb (327 kg)	500 lb (227 kg)	500 lb (227 kg)
<b>Power</b>	120-230V-50/60 Hz	120-230V-50/60 Hz	-	-
<b>Mattress Pad</b>	3 in (8 cm)	3 in (8 cm)	3 in (8 cm)	3 in (8 cm)

## Horizon™ Retracto Rail Stretcher

The Horizon Hydraulic Retracto Rail Stretcher is designed to provide long-lasting and consistent performance during transport in any hospital, surgical or outpatient environment.

- 800 lb (363 kg) Weight Capacity\* (462FMCST/462HMCST models)
- Standard and Wide Widths to accommodate most patients comfortably
- Dual Side foot controls for easy height adjustment and Trendelenburg positioning
- Pneumatic Assist Backrest adjusts 0° - 90° for easy patient positioning and enhanced staff safety
- Center Track Steering for superb mobility
- Brake and Steer Controls accessible from all four corners
- Optional Knee Flex feature for enhanced patient comfort (GMCST model)
- Stainless Steel 3-position Retracto rails offer maximum patient access
- Comfort Mattress Pad

Models 462EMCST, 462GMCST, 462FMCST, 462HMCST



## Horizon AirGlide™ Stretcher

The AirGlide Stretcher is equipped with powder-coated rails and a clear, Ion Technology sealer coat for easy cleaning and ideal transport, treatment and recovery functions.

- 800 lb (363 kg) Weight Capacity\* (462DPAST model)
- Full-length Pneumatic Assist side rails are higher and longer for enhanced patient safety
- Dual side foot controls for easy height adjustment and Trendelenburg positioning
- Center Track Steering for superb mobility
- Brake and Steer Controls accessible from all four corners
- Open base design provides ample storage space to hold oxygen tanks and patient belongings
- Comfort Mattress Pad

Models 462APAST, 462CPAST, 462DPAST



Model	Standard Width 462EMCST 462GMCST	Wide Width 462FMCST 462HMCST
<b>Height Range: High</b>	34.75 in (88 cm)	34.75 in (88 cm)
<b>Height Range: Low</b>	22.25 in (56.5 cm)	22.25 in (56.5 cm)
<b>Overall Width</b>	30 in (76 cm)	34.5 in (87.6 cm)
<b>Overall Length</b>	83 in (210 cm)	83 in (210 cm)
<b>Patient Surface Width</b>	25 in (63.5 cm)	30 in (76 cm)
<b>Patient Surface Length</b>	76 in (193 cm)	76 in (193 cm)
<b>Backrest Degree of Movement</b>	0° - 90°	0° - 90°
<b>Knee Flex Degree of Movement</b>	0° - 70° (GMCST)	0° - 70° (HMCST)
<b>Trendelenburg/Reverse Trendelenburg</b>	16°	16°
<b>Retracto Rail Height</b>	15 in (38 cm)	15 in (38 cm)
<b>Retracto Rail Length</b>	60 in (152 cm)	60 in (152 cm)
<b>Casters</b>	8 in Tente (20 cm)	8 in Tente (20 cm)
<b>Maximum Weight Capacity* (Evenly Distributed)</b>	500 lb (227 kg)	800 lb (363 kg)
<b>Mattress Pad</b>	4 in (10 cm)	4 in (10 cm)

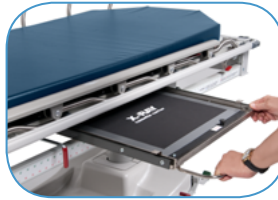
Model	Standard Width 462APAST 462CPAST	Wide Width 462DPAST
<b>Height Range: High</b>	34.75 in (88 cm)	34.75 in (88 cm)
<b>Height Range: Low</b>	22 in (56 cm)	22 (56 cm)
<b>Overall Width</b>	31.25 in (79.4 cm)	35 in (89 cm)
<b>Overall Length</b>	83 in (210 cm)	83 in (210 cm)
<b>Patient Surface Width</b>	28 in (71 cm)	32 in (81 cm)
<b>Patient Surface Length</b>	76 in (193 cm)	77 in (196 cm)
<b>Backrest Degree of Movement</b>	0° - 90°	0° - 90°
<b>Knee Flex Degree of Movement</b>	0° - 70° (CPAST)	0° - 70°
<b>Trendelenburg/Reverse Trendelenburg</b>	16°	16°
<b>AirGlide Rail Height</b>	15 in (38 cm)	15 in (38 cm)
<b>AirGlide Rail Length</b>	75 in (190 cm)	75 in (190 cm)
<b>Casters</b>	8 in Tente (20 cm)	8 in Tente (20 cm)
<b>Maximum Weight Capacity* (Evenly Distributed)</b>	500 lb (227 kg)	800 lb (363 kg)
<b>Mattress Pad</b>	4 in (10 cm)	4 in (10 cm)

## X-Ray Trauma Stretcher

The X-Ray Trauma Stretcher is intended for transport, treatment and recovery of patients' intra-and interdepartmentally in healthcare facilities. This unit offers unparalleled full-length X-ray capabilities.

- 500 lb (227 kg) Weight Capacity\*
- Radiolucent patient surface provides clear imaging
- Full-Length Tracking X-Ray Cassette Carrier (up to 14 in x 17 in / 36 cm x 43 cm cassettes) with Film Location Indicators
- Dual Side Foot Controls for easy height adjustment and Trendelenburg positioning
- Center Track Steering for superb mobility
- Brake and Steer Controls accessible at all four corners
- Stainless Steel 3-Position Retracto rails to help keep patient secure during transport

Model 468XRYST



## Fluoro-Track™ Fluoroscopy Stretcher

The Fluoro-Track Stretcher is designed for use with C- Arms for fluoroscopy-guided procedures. Its unique design, with a proprietary sliding top, enables a broader range of imaging capacity without repositioning the patient.

- 500 lb (227 kg) Weight Capacity\*
- Full length radiolucent top
- 18 in (43 cm) Sliding Top enables a broader range of imaging capacity without repositioning the patient or C-Arm
- Hourglass base design with trimmed sides creates an excellent window for C-arm access from both sides with 23 in (53 cm) C-arm clearance
- Dual-column base support provides increased maneuverability
- Stainless Steel 3-Position Retracto rails offer maximum patient access
- Dual Side Foot Controls for easy height adjustment and Trendelenburg positioning
- Comfort Mattress Pad

Model 493RPCST

Sliding Top:  
12 in (30. cm) toward foot end  
6 in (19 cm) toward head end



Slides 6 in (19 cm)



Centered



Slides 12 in (30 cm)



Model	468XRYST
Height Range: High	35 in (89 cm)
Height Range: Low	26 in (66 cm)
Overall Width	33.5 in (85 cm)
Overall Length	83 in (211 cm)
Patient Surface Width	28.5 in (72 cm)
Patient Surface Length	73 in (185 cm)
Backrest Degree of Movement	0° - 90°
Trendelenburg/Reverse Trendelenburg	18°
Retracto Rail Height	15 in (38 cm)
Retracto Rail Length	64 in (163 cm)
Casters	8 in Tente (20 cm)
Maximum Weight Capacity* (Evenly Distributed)	500 lb (227 kg)
Mattress Pad	3 in (8 cm)

Model	493RPCST
Height Range: High	36 in (91 cm)
Height Range: Low	23 in (58 cm)
Overall Width	29.75 in (76 cm)
Overall Length	80.25 in (204 cm)
Patient Surface Width	24 in (61 cm)
Patient Surface Length	76 in (193 cm)
Backrest Degree of Movement	0° - 80°
Trendelenburg/Reverse Trendelenburg	15°
Retracto Rail Height	15 in (38 cm)
Retracto Rail Length	64 in (163 cm)
Casters	8 in Tente (20 cm)
Maximum Weight Capacity* (Evenly Distributed)	500 lb (227 kg)
Mattress Pad	3 in (8 cm)



## ConVerge™ Powered Treatment and Exam Stretcher

Designed to be a multi-tasking stretcher and chair ideal for the ER, PACU, OR and L&D departments. Its multiple uses help eliminate patient transfers, providing cost and time savings and enhanced safety for both patients and staff.

- 720 lb (327 kg) Weight Capacity\* and 31 in (79 cm) width to accommodate larger patients
- Powered positioning and adjustment system features a handheld pendant for use by the patient or care provider
- Fold-down footrest enhances patient comfort while stretcher is in chair/exam position
- Integral, self-storing stirrups allow quick and precise pelvic exams, labor assessment, or emergency treatment
- Brake and Steer Controls accessible at all four corners
- Lock Caster Steering for superb mobility
- Battery backup
- Comfort Mattress Pad

Models 4E7APRST, 4D7APRST



## Horizon Powered Bariatric Stretcher

The Powered Bariatric Stretcher is designed to meet your bariatric patient management needs while versatile enough to be used in every phase of care.

- 720 lb (327 kg) Weight Capacity\*
- Extra-wide (32 in/81 cm) patient surface provides greater patient comfort for extended stays
- Lightweight, maneuverable unit fits easily through doorways
- Powered controls for Head, Foot, Hi-low and Trendelenburg/Reverse Trendelenburg positioning
- Full-length Air Glide side rails for patient safety and zero transfer gap
- Center Track Steering for superb mobility
- Battery backup
- Comfort Mattress Pad

Models 4E2DPAST, 4D2DPAST



Model	4E7APRST 4D7APRST+
<b>Height Range: High</b>	33.5 in (85 cm)
<b>Height Range: Low</b>	25.5 in (65 cm)
<b>Overall Width</b>	31.1 in (79 cm)
<b>Overall Length</b>	81 in (206 cm)
<b>Patient Surface Width</b>	27.5 in (70 cm)
<b>Patient Surface Length</b>	72 in (183 cm)
<b>Backrest Degree of Movement</b>	0° - 80°
<b>Knee Flex Degree of Movement</b>	-
<b>Trendelenburg/Reverse Trendelenburg</b>	12°
<b>Retracto Rail Height</b>	15 in (38 cm)
<b>Retracto Rail Length</b>	40 in (102 cm)
<b>Casters</b>	8 in Tente (20 cm)
<b>Maximum Weight Capacity* (Evenly Distributed)</b>	720 lb (327 kg)
<b>Power</b>	120-230V~50/60 Hz
<b>Mattress Pad</b>	3 in (8 cm)

Model	4E2DPAST 4D2DPAST+
<b>Height Range: High</b>	29.5 in (75 cm)
<b>Height Range: Low</b>	21.5 in (55 cm)
<b>Overall Width</b>	35 in (89 cm)
<b>Overall Length</b>	82 in (208 cm)
<b>Patient Surface Width</b>	32 in (81 cm)
<b>Patient Surface Length</b>	77 in (196 cm)
<b>Backrest Degree of Movement</b>	0° - 80°
<b>Knee Flex Degree of Movement</b>	50°
<b>Trendelenburg/Reverse Trendelenburg</b>	12°
<b>AirGlide Rail Height</b>	15 in (38 cm)
<b>AirGlide Rail Length</b>	75 in (191 cm)
<b>Casters</b>	8 in Tente (20 cm)
<b>Maximum Weight Capacity* (Evenly Distributed)</b>	720 lb (327 kg)
<b>Power</b>	120-230V~50/60 Hz
<b>Mattress Pad</b>	5 in (13 cm)

## Pediatric Stretcher

The Pediatric Stretcher is ideal for the littlest patients who need the most protection. For infants to six year olds, it provides the safety and security of 360° patient protection and access.

- 325 lb (147 kg) Weight Capacity\*
- Adjustable backrest from 0° – 45° for patient comfort
- Dual Side Foot Controls for easy height adjustment and 10° Trendelenburg positioning
- Extra-high side rails provide three positions for patient safety access and transfer
- Removable end rails allow easy patient access
- Brake and Steer Controls accessible at all four corners
- Comfort Mattress Pad

Model 4160DOST



## Youth Stretcher

The Youth Stretcher is ideal for patients who are too large for a crib or pediatric stretcher from six years of age to adolescence, but still require 360° of protection. It is intended for easy transport, examination and care of smaller patients in healthcare facilities.

- 500 lb (227 kg) Weight Capacity\*
- Dual Side Foot Controls for easy height adjustment and 12° Trendelenburg positioning
- Pneumatic-Assisted backrest from 0° – 90° for patient comfort and safer staff use
- 3-position vertical side rails for patient safety and transfer
- Brake and Steer Controls accessible at all four corners
- Center Track Steering for superb mobility
- Comfort Mattress Pad

Model 462EMPST



Model	4160DOST
Height Range: High	39 in (99 cm)
Height Range: Low	32.25 in (82 cm)
Overall Width	29.75 in (76 cm)
Overall Length	59.25 in (150.5 cm)
Patient Surface Width	25 in (64 cm)
Patient Surface Length	56 in (142 cm)
Backrest Degree of Movement	0° - 45° (manual)
Trendelenburg/Reverse Trendelenburg	10°
Vertical Rail Height	17.75 in (45 cm)
Vertical Rail Length	56 in (142 cm)
End Rail Height	17.75 in (45 cm)
End Rail Length	23 in (58 cm)
Spindle Gap Maximum	3 in (8 cm)
Spindle Gap Minimum	3.75 in (10 cm)
Casters	8 in Tente (20 cm)
Maximum Weight Capacity* (Evenly Distributed)	325 lb (147 kg)
Mattress Pad	3 in (8 cm)

Model	462EMPST
Height Range: High	37 in (94 cm)
Height Range: Low	28.5 in (92 cm)
Overall Width	30 in (76 cm)
Overall Length	83 in (211 cm)
Patient Surface Width	25 in (64 cm)
Patient Surface Length	76 in (193 cm)
Backrest Degree of Movement	0° - 90°
Trendelenburg/Reverse Trendelenburg	12°
Vertical Rail Height	16 in (41 cm)
Vertical Rail Length	73 in (185 cm)
End Rail Height	16 in (41 cm)
End Rail Length	23 in (58 cm)
Spindle Gap Maximum	2.5 in (6 cm)
Spindle Gap Minimum	4 in (10 cm)
Casters	8 in Tente (20 cm)
Maximum Weight Capacity* (Evenly Distributed)	500 lb (227 kg)
Mattress Pad	3 in (8 cm)

## Powered Surgical Chair

The Surgical Chair is a mobile, single patient platform for EYE, ENT, Plastic surgery and other procedures in a chair configuration. Designed to improve case turnaround time and streamline patient handling, the ESC can be used pre-op through post-op, eliminating multiple patient transfers.

- 500 lb (227 kg) Weight Capacity\*
- Patented Articulating Headrest allows infinite and precise positioning of the head and neck
- Powered controls easily maneuver back, head and leg sections for patient comfort and overall height adjustment
- Low height of 22.4 in ( 57 cm) for easy patient accessibility
- Narrow width to facilitate steering and positioning in small spaces
- Swing-down, self-storing side rails with padded armrests and fold-down, height-adjustable footrest to secure patient during transport and procedure
- Dual-density foam sectional pad with memory foam and fluid-resistant, 4-way Stretch Urethane Cover enhances comfort

Models ESCEYEST, ESDEYEST



## Ophthalmology Platform

The new ESC<sup>2</sup> Ophthalmology Platform is a single-patient platform from pre-op through post-op and ideal for eye, ENT, and head and neck procedures.

- Patented articulating headrest features infinite positioning
- SMART CASTER TECHNOLOGY with Auto Braking and Advanced Steering improves maneuverability
- Industry-Leading Height Range — 20 to 40 inches (51 to 102 cm) for greater procedure flexibility
- Wider Patient Surface — 26 inches (66 cm) for enhanced patient comfort
- 0° – 15° Seat Tilt improves patient comfort and safety
- Positioning at your fingertips with intuitive Hand Pendant with Pre-Sets and 3 Memory Positions
- 600 lb (272 kg) Weight Capacity\*

Model ESC2EYEST



Model	ESCEYEST/ESDEYEST+	ESC2EYEST
<b>Height Range: High</b>	32.5 in (83 cm)	40 in (102 cm)
<b>Height Range: Low</b>	22.5 in (57 cm)	20 in (51 cm)
<b>Overall Width</b>	29.4 in (75 cm)	32 in (81 cm)
<b>Overall Length</b>	75 in (191 cm)	83 in (211 cm)
<b>Patient Surface Width</b>	22 in (56 cm)	26 in (66 cm)
<b>Patient Surface Length</b>	75 in (191 cm)	75 in (191 cm)
<b>Seat Tilt</b>	-	0° - 15°
<b>Backrest Degree of Movement</b>	0° - 80°	0° - 85°
<b>Trendelenburg/Reverse Trendelenburg</b>	6°	15°
<b>Side Rail Height</b>	10.75 in (27 cm)	10.25 in (26 cm)
<b>Side Rail Length</b>	26.74 in (68 cm)	18.5 in (47 cm)
<b>Casters</b>	5 in Easy Roll (13 cm)	5 in Easy Roll (13 cm)
<b>Maximum Weight Capacity* (Evenly Distributed)</b>	500 lb (227 kg)	600 lb (272 kg)
<b>Power</b>	120-230V~50/60 Hz	100-240V~50/60 Hz
<b>Sectional Pad</b>	2.5 in Sectional w/ Memory Foam (6.4 cm)	3 in Sectional w/ Memory Foam (8 cm)





## Powered / Hydraulic All Purpose Chair

The All Purpose Chair can be used in the Emergency Department, Triage, Surgery Centers, Physician's Offices, GI Labs, Dialysis Clinics, Step-Down Units and many more. Its versatile design allows streamlined handling through treatment, transport and recovery.

- 500 lb (227 kg) Weight Capacity\* (EPC250ST and EPD250ST models)
- Dual Side Foot Controls for easy height adjustment and Trendelenburg positioning
- Emergency Release for immediate Trendelenburg positioning
- Four-Wheel Brake and Steer System operable from both sides
- Handheld pendant for height, backrest and independent leg section adjustments (EPC/EPD model)
- Swing-down, self-storing side rails with padded armrests help keep patient secure during transport
- 5 in (13 cm) Easy Roll casters for enhanced maneuverability
- Dual-density foam sectional pad with Fluid-Resistant, 4-way Stretch Urethane Cover enhances comfort

Models APC250ST, EPC250ST, EPD250ST



EPC Pendant

## Powered Procedure Chair

The Powered Procedure Chair is a single patient platform which increases productivity and throughput and decreases turnover time. Its versatile design allows reduced staff time and prevents staff injury involved in transferring patients during various phases of care. The new radiolucent back allows for multiple imaging procedures.

- Full Radiolucent Back, shown at below right, allows for Multiple Imaging Procedures
- 6° Reverse Trendelenburg to improve surgical exposure
- Smart Caster Technology with Auto Braking and Advanced Steering for improved patient and staff safety
- Industry-Leading Height Range — 20 to 40 inches (51 to 102 cm) for greater procedure flexibility
- Wider Patient Surface — 26 inches (66 cm) — enhances patient comfort
- Positioning at your fingertips with intuitive Hand Pendant with Pre-Sets and 3 Memory Positions
- 600 lb (272 kg) Weight Capacity\*



Model	APC250ST	EPC250ST/ EPD250ST+	EPC500ST
<b>Height Range: High</b>	31.5 in (80 cm)	32.5 in (83 cm)	40 in (102 cm)
<b>Height Range: Low</b>	23.5 in (60 cm)	22.5 in (57 cm)	20 in (51 cm)
<b>Overall Width</b>	27.75 in (70.5 cm)	29.4 in (75 cm)	32 in (81 cm)
<b>Overall Length</b>	75 in (191 cm)	75 in (191 cm)	83 in (211 cm)
<b>Patient Surface Width</b>	22 in (56 cm)	22 in (56 cm)	26 in (66 cm)
<b>Patient Surface Length</b>	70.5 in (179.1 cm)	70.5 in (179 cm)	78.5 in (199 cm)
<b>Radiolucent Back</b>	-	-	Yes
<b>Seat Tilt</b>	-	-	0° - 15°
<b>Backrest Degree of Movement</b>	0° - 80°	0° - 80°	0° - 90°
<b>Trendelenburg/Reverse Trendelenburg</b>	10°/-	6°/-	15°/6°
<b>Side Rail Height</b>	12 in (30 cm)	10.75 in (27 cm)	10.25 in (26 cm)
<b>Side Rail Length</b>	29 in (74 cm)	26.75 in (68 cm)	18.5 in (47 cm)
<b>Casters</b>	5 in Easy Roll (13 cm)	5 in Easy Roll (13 cm)	5 in Easy Roll (13 cm)
<b>Maximum Weight Capacity* (Evenly Distributed)</b>	325 lb (147 kg)	500 lb (227 kg)	600 lb (272 kg)
<b>Power</b>	-	120-230V~50/60 Hz	100-240V~50/60 Hz
<b>Sectional Pad</b>	3 in Sectional (8 cm)	2.5 in Sectional w/ Memory Foam (6.4 cm)	3 in Sectional w/ Memory Foam (8 cm)

## Mammography/Biopsy Chair

The Mammography/Biopsy Chair is designed with a shortened base for positioning in small rooms with large imaging equipment. The backrest adjusts from a full upright position of 90° to supine to provide maneuvering between the X-ray machine and wall, providing a stable work surface, during mammography/biopsy procedures.

- 325 lb (147 kg) Weight Capacity\*
- Shortened base with Easy Roll casters and push bar for easy maneuvering around imaging equipment and facility transport
- Dual Side controls for height adjustment and Trendelenburg positioning
- Emergency Release Lever for immediate Trendelenburg positioning
- Swing-down, self-storing side rails with padded armrests help keep patient secure during procedure and transport
- Dual-density foam sectional pad with Fluid-Resistant 4-way, Stretch Urethane Cover enhances comfort

Model MBC00ST



## Video Imaging Chair

The Video Imaging Chair is designed for Modified Barium Swallow Studies, AP/Lateral Imaging, and a Procedural Chair for diagnosis and treatment. The shortened base is easy to maneuver in smaller rooms.

- 325 lb (147 kg) Weight Capacity\*
- Removable radiolucent back section for radiological procedures
- Easy-to-operate 90° rotating seat saves time in repositioning patient for anterior-posterior and lateral imaging
- Four Wheel Brake and Steer System
- Swing-down, self-storing side rails with padded armrests help keep patient secure during procedure and transport
- Dual-density foam sectional pad with Fluid Resistant, 4-way Stretch Urethane Cover enhances comfort

Model VIC429ST



Model	MBC00ST
<b>Height Range: High</b>	31.5 in (80 cm)
<b>Height Range: Low</b>	23.5 in (60 cm)
<b>Overall Width</b>	27 in (69 cm)
<b>Overall Length</b>	75 in (191 cm)
<b>Patient Surface Width</b>	22 in (56 cm)
<b>Patient Surface Length</b>	70.5 in (179 cm)
<b>Backrest Degree of Movement</b>	0° - 90°
<b>Trendelenburg</b>	10°
<b>Side Rail Height</b>	10.75 in (27 cm)
<b>Side Rail Length</b>	26.74 in (68 cm)
<b>Casters</b>	5 in Easy Roll (13 cm)
<b>Maximum Weight Capacity* (Evenly Distributed)</b>	325 lb (147 kg)
<b>Sectional Pad</b>	3 in Sectional (8 cm)

Model	VIC429ST
<b>Height Range: High</b>	31.5 in (80 cm)
<b>Height Range: Low</b>	23.5 in (60 cm)
<b>Overall Width</b>	27 in (69 cm)
<b>Overall Length</b>	76.5 in (194 cm)
<b>Patient Surface Width</b>	22 in (56 cm)
<b>Patient Surface Length</b>	70.5 in (179 cm)
<b>Backrest Degree of Movement</b>	90°
<b>Trendelenburg</b>	10°
<b>Side Rail Height</b>	12 in (30 cm)
<b>Side Rail Length</b>	22 in (74 cm)
<b>Casters</b>	5 in Easy Roll (13 cm)
<b>Maximum Weight Capacity* (Evenly Distributed)</b>	325 lb (147 kg)
<b>Sectional Pad</b>	3 in Sectional (8 cm)

# Stretcher Accessories

Model	Description	4160 DOST	462 EMPST	462 EMCST	462 FMCST	462 GMCST	462 HMCST	462 APAST	462 CPAST	462 DPAST	493 RPCST	468 XRYST	4E2/ 4D2 DPAST	4E7/ 4D7 APRST
<b>Accessory Rail</b>														
H076540	Surgical Accessory Rail (AirGlide Rails)							•	•	•			•	
H076336	Surgical Accessory Rail (Retracto Rails)			•	•	•	•				•			
<b>Armboard</b>														
H07633400	Armboard and Surgical Rail Adapter		•	•	•	•	•					•		
H06518000	Armboard w/ 1 in (2.5 cm) Pad and Adapter							•	•	•			•	•
<b>Cassette Holder</b>														
H00005400	Lateral X-Ray Cassette Holder		•	•	•	•	•				•	•		
<b>Drainage Bag Hook</b>														
H12884A	Drainage Bag Hook	•	•	•	•	•	•				•			
<b>Drain Basin</b>														
H000C4400	Drain Basin, Stainless Steel													•
<b>Headrests</b>														
H131490	Articulating Headrest 22 in (57 cm)		•	•		•						•		
H131495	Articulating Headrest 27 in (69 cm)				•		•							
HSA094100	Standard Articulating Headrest 18 in (46 cm)							•	•					•
HSA0942	Extra-Wide Articulating Headrest 21 in (53 cm)									•			•	
<b>Head/Footboards</b>														
H06883600	Footboard w/ Monitor Shelf and Chartholder		•	•		•						•		
H06884600	Footboard w/ Monitor Shelf and Chartholder				•		•							
H07634700	Footboard w/ Monitor Shelf and Chartholder												•	
H06929900	Footboard w/ Monitor Shelf and Chartholder									•			•	
H06883500	Footboard w/ Monitor Shelf and Chartholder							•	•					•
H00006B00	Head/Footboard (Stationary)		•	•		•						•		
H000W6B00	Head/Footboard (Stationary)				•		•							
H00CR6B00	Footboard w/ Chartholder		•	•		•						•		
H0CRW6B00	Footboard w/ Chartholder (Extra-Wide)				•		•							
H07634100	Head/Footboard (Stationary)												•	
H06722500	Head/Footboard w/ Chartholder (Extra Wide)							•	•					
H06938100	Head/Footboard w/ Chartholder (Stationary)									•			•	

### Armboard

Mounts to surgical accessory rail for greater flexibility in patient positioning



### Lateral X-Ray Cassette Holder

Allows X-ray imaging without patient transfer for added versatility



### Drain Basin

Easy-clean stainless steel contains and controls fluids



### Foot Control

Allows easy height adjustments



### Footboard with Chartholder

Fixed footboard minimizes patient slipping and allows easy access to patient chart



### Footboard with Monitor Shelf and Chartholder

Versatile footboard supports a monitor/defibrillator plus chartholder



# Stretcher Accessories

Model	Description	4160 DOST	462 EMPST	462 EMCST	462 FMCST	462 GMCST	462 HMCST	462 APAST	462 CPAST	462 DPAST	493 RPCST	468 XRYST	4E2/ 4D2 DPAST	4E7/ 4D7 APRST
<b>Heel Stirrups</b>														
H00N16A00	Heel Stirrups w/ Mounting Adapter		•	•	•	•	•					•	•	
H00C16H00	Heel Stirrups (Pair)							•	•	•			•	
H00L16M00	Mounting Adapter Clamps For Stirrups							•	•	•			•	
<b>IV Poles</b>														
H000E1700	Fixed Height IV Pole, 42 in (107 cm)	•	•	•	•	•	•	•	•	•	•	•	•	•
H000018	Telescoping IV Pole 27 in - 54 in (68 cm - 137 cm)	•	•	•	•	•	•	•	•	•	•	•	•	•
H06589700	Mobile IV Stand Attachment	•	•	•	•	•	•					•		
HIVSTOW00	Mobile IV Stand Attachment							•	•	•			•	•
H07634400	Mobile IV Stand Attachment											•		
<b>Monitor Shelf</b>														
H00WN4500	Monitor Shelf (Wide)				•			•						
H000N4500	Monitor Shelf (Standard Width)		•	•				•				•		
<b>Oxygen Tank Holder</b>														
H12845000	Vertical Oxygen Tank Holder Assembly		•	•	•	•	•					•	•	
<b>Paper Roll Holder</b>														
H06925700	Paper Roll Holder	•	•	•	•	•	•	•	•	•	•	•	•	•
<b>Patient Tray/Under Fowler Trays</b>														
H06536600	Universal Patient Tray	•	•	•	•	•	•	•	•	•	•	•	•	•
H13317000	Under Fowler Utility Tray		•	•		•						•		
H13317100	Under Fowler Utility Tray (Extra-Wide)				•			•						
<b>Push Handles</b>														
H07565600	Push Handle Assembly		•	•	•	•	•					•	•	
H07566400	Push Handle Assembly							•	•					•
H07566500	Push Handle Assembly									•			•	
<b>Rail Covers</b>														
H076336	Retracto Rails		•	•	•	•	•					•	•	
H076540	Airglide Rails							•	•	•			•	
H07562600	Rail Pad Cover (6 Leg Retracto Rail)			•	•	•	•					•	•	
H06774100B	Side Rail Pads		•					•	•	•			•	
H00011P00B	Side and End Rail Pads	•												
H00P11R00B	Side and End Rail Pads		•											
<b>Safety Straps</b>														
H00001200	Safety Straps with Buckle	•	•	•	•	•	•	•	•	•	•	•	•	•

## Heel Stirrups

Attachable stirrups allow greater exam flexibility



## Oxygen Tank Holder

Safely stores O2 tanks out of the procedure field



## Under Fowler Utility Tray

Increased storage space while backrest is elevated



## Mobile IV Attachment/IV Poles

Position IV from 27 in (68 cm) to 54 in (137 cm)



Mobile IV Attachment



Telescoping IV Pole

## Universal Tray

Enhance patient convenience with space for personal belongings or supplies



## Push Handles

Provide extra control, easy start-ups and enhanced staff safety



## Rail Covers

Slip-on side and end covers for extra patient protection





# Stretcher Accessories

Model	Description	578 EYEST	578 EYXST	5E8/5D8 EYEST	5E8/5D8 EYXST
<b>Accessory Rail</b>					
HSA400700	Surgical Accessory Rail	•	•	•	•
H076336	Surgical Accessory Rail (Retracto Rails)	•	•	•	•
<b>Armboard/Pad</b>					
HSA400500	Armboard with 2 in (5 cm) Pad and 2 Mounting Rails	•	•	•	•
<b>Foot Control</b>					
HSA080000	Electric Foot Control, Hi/Low			•	•
<b>Headrests</b>					
H0101ST	Contoured Headrest Set (2, 3, 4 in)	•	•	•	•
HSA063500B	Contoured Headrest, Navy, 4 in (10.2 cm)	•	•	•	•
HP150830448B	Contoured Headrest, Navy, 3 in (7.6 cm)	•	•	•	•
HP150830447B	Contoured Headrest, Navy, 2 in (5 cm)	•	•	•	•
<b>Head/Foot/End Boards</b>					
HSA078700	Pre-Op/Post-Op Head Extension	•		•	
HSA079000	Pre-Op/Post-Op Head Extension (Wide)		•		•
H06883600	Footboard w/ Monitor Shelf and Chartholder	•		•	
H06884600	Footboard w/ Monitor Shelf and Chartholder		•		•
H00CR6B00	Footboard with Chart Holder	•		•	
H0CRW6B00	Footboard with Chart Holder		•		•
<b>IV Poles</b>					
H000E1700	Fixed Height IV Pole, 42 in (107 cm)	•	•	•	•
H000018	Telescoping IV Pole 27 in - 54 in (68 cm - 137 cm)	•	•	•	•
<b>Monitor Shelf</b>					
H00WN4500	Monitor Shelf (Wide)		•		•
H00N4500	Monitor Shelf (Standard Width)	•		•	
<b>Oxy Flex II Oxygen Delivery System</b>					
HSA400600	OxyFlex II with Flexible Support Structure and Adapter, Well Mount	•	•	•	•
HSA008000	Disposable OxyFlex II Diffusion Trays (25/case)	•	•	•	•
<b>Oxygen Tank Holder</b>					
H12845000	Vertical Oxygen Tank Holder Assembly	•	•	•	•
<b>Paper Roll Holder</b>					
H06925700	Paper Roll Holder	•	•	•	•
<b>Patient Trays</b>					
H06536600	Universal Patient Tray	•	•	•	•
<b>Push Handles</b>					
H07565600	Push Handles (Foot End Only)	•	•	•	•
<b>Rail Covers</b>					
HPD0602	Rail Set, 4 Leg Retracto Rail	•	•	•	•
<b>Safety Straps</b>					
H00001200	Safety Straps with Buckle	•	•	•	•
<b>Wrist Rests</b>					
HSA078500	Dual Lateral Wrist Rest	•	•	•	•
HSA078600	Full "U" Wrist Rest	•	•	•	•
HSP100400	Full "U" Wrist Rest (Large)	•	•	•	•

**Accessory Rail**  
Mounts armboards or accessories for ease of use and optimum patient positioning



**Headrests**  
Contoured headrests for optimal patient positioning



**OxyFlex II**  
Allows a smooth and even flow of oxygen to the surgical area



**Wrist Rests**  
Full "U" for greater surgeon control during EYE/ENT procedures



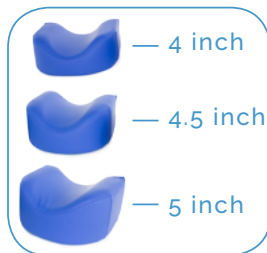
**Armboard**  
Mounts to surgical accessory rail for greater flexibility in patient positioning



**Foot Control**  
Allows easy height adjustments



**Headrest Kit (3pc):**  
Includes 3 headrests with variety of thicknesses



Full "U"

Dual Arm

Dual Arm allows independent positioning for greater surgeon comfort

# Chair Accessories

Model	Description	MBC000ST	VIC429ST	APC250ST	EPC250ST EPD250ST	ESCEYEST ESDYEST	ESC2EYEST	EPC500ST
<b>OxyFlex II Oxygen Delivery System</b>								
HSA007900	OxyFlex II with Flexible Support Structure and Adapter, Tuck Plate	•		•	•	•		
HSA008000	Disposable OxyFlex II Diffusion Trays (25/case)	•		•		•	•	•
HSA080003	Oxyflex II Oxygen Delivery System						•	•
<b>Paper Roll Holder</b>								
H13008000	Paper Roll Holder			•	•	•		
H13008001	Paper Roll Holder	•	•					
<b>Pediatric Positioners</b>								
HSA063600	Pediatric Positioner - 36 in x 7 in (91 cm x 18 cm)		•					
HSA063700	Pediatric Positioner - 48 in x 10 in (122 cm x 25 cm)		•					
HSA063800	Pediatric Positioner - 60 in x 13 in (152 cm x 33 cm)		•					
<b>Safety Straps</b>								
H066951	Safety Strap Hook and Loop	•	•	•	•	•		
HAPC012L	Safety Strap Extra-Long Hook and Loop	•	•	•	•	•	•	•
HAPC01200	Standard Safety Strap Hook and Loop	•	•	•	•	•		
HSA071600	Safety Strap Extra-Wide Hook and Loop	•	•	•	•	•	•	•
HSA0716L	Safety Strap Extra-Long Hook and Loop		•	•				
HSA072500	Head Strap Hook and Loop		•					
HSA080015	Patient Safety Strap W/Buckle And Clip, Non-Hook & Loop						•	•
<b>Surgical Support Legs</b>								
HAPC02500	Surgical Support Legs (Pre May 2016)	•						
<b>Trays and Side Tables</b>								
H06892700	Folding Side Table (Pre July 2013)			•	•	•		
H080346	Folding Side Table (Post July 2013)				•	•		
HAPC02100	Overlap Patient Tray w/ Storage Rack			•				
H06816700	Overlap Patient Tray w/o Storage Rack				•	•		
H06124000	Utility Tray	•	•					
H080268	Side Utility Tray (Stainless Steel)	•	•	•	•	•	•	•
HSA080019	Folding Side Table (Each)							
<b>Wrist Rests</b>								
HSA078500	Dual Lateral Wrist Rest					•	•	
HSA078600	Full "U" Wrist Rest					•	•	
HSP100400	Full "U" Wrist Rest (Large)					•	•	
H065990	Seated Armboard Assembly (No Pad)						•	•
HSA080029	Orthopedic Hand Surgery Board						•	•
HSA080014	Electric Foot Control, Hi/Lo						•	•
HSA080018	IV Pole/Pendant Holder						•	•

## Accessory Rail

Mounts armboards or accessories for ease of use and optimum patient positioning



## Headrests

Contoured headrests for optimal patient positioning



## Foot Extension

Provides extra leg length (14 in/35,6cm) to foot end



## Foot Control

Allows easy height adjustments



## Foot End Push Handles

Ergonomic Push Handles For Increased Staff Safety



## Upper Shoulder Supports

Provides Patient Support And Comfort



## IV Poles

Convenient, Removable Poles To Hold IV Solutions/Fluids



## IV Pendant Holder

Allows For Alternative Pendant Storage When Needed



# Chair Accessories

Model	Description	MBC000ST	VIC 429ST	APC 250ST	EPC250ST EPD250ST	ESCEYEST ESDYEST	ESC2EYEST	EPC500ST
<b>Accessory Rail</b>								
HSA010000	Surgical Accessory Rail	•	•	•	•	•	•	•
HSA080024	Surgical Accessory Rail, Leg - Universal						•	•
HSA080025	Surgical Accessory Rail, Head - ESC2EYEST						•	•
HSA080026	Surgical Accessory Rail, Head - EPC500ST						•	•
HSA080013	Shoulder Rail/Ext., Pair						•	•
<b>Armboard/Pad</b>								
H06123900	Armboard w/ Pad for Reclined Position			•	•			
H065990	Seated Armboard without Pad	•	•	•	•		•	•
H06599000	Seated Armboard Assembly w/ Pad	•	•	•	•		•	•
HSA041300	Armboard w/ 2 in (5 cm) Pad and Clamp)					•	•	•
<b>Foot Extension</b>								
H080015	Chair Foot Extension	•	•	•	•	•		
<b>Foot Control</b>								
HSA075500	Electric Foot Control, Hi/Low (Pre 2012)				•	•		
HSA07550A	Electrical Foot Control (Post 2012)				•	•		
<b>Headrests</b>								
H0102CH	Contoured Headrest Set, Spruce (3 in, 4 in / 8 cm, 9 cm)					•		
H080258B	Contoured Headrest, Spruce, 3 in / 8 cm					•		
HP150830437B	Contoured Headrest, Spruce, 4 in / 9 cm					•		
H0103ESC2	Contoured Head Rests (3/ST)							
H080988/H080989/H080990	Contoured Head Rest - 4in/4.5in/5in -ESC <sup>2</sup>						•	•
<b>Heel Stirrups</b>								
HAPC02600	Heel Stirrups w/ Mounting Adapters			•	•			
H061401	Accessory Adapter Patient Right			•	•			
H061402	Accessory Adapter Patient Left			•	•			
<b>IV Poles</b>								
H000E1700	IV Pole, 42" in (107 cm) Fixed Height, Removable	•	•	•	•	•		
H000018	Telescoping IV Pole 27 in - 54 in (68 cm - 137 cm)	•	•	•	•	•	•	•
H080770	Monitor IV Pole						•	•
<b>Oxygen Tank Holders</b>								
HAPC14D00	O2 Tank Holder	•	•	•				
HEC0001	O2 Tank Holder				•	•		
HSA080009	O2 Tank Holder							
HSA080020	Foot End Push Handles, Pair						•	•

## Oxygen Tank Holders

Safely stores O2 tanks out of the procedure field



## Paper Roll Holder

Accommodates standard exam paper rolls to protect chair



## Pediatric Positioner

Offers flexibility to utilize chair for adult and pediatric procedures



## Safety Straps

Multiple size, replacement style options to enhance patient safety



## Trays and Side Tables

Enhance patient convenience with space for personal belongings or supplies



## Wrist Rests

Full "U" for greater surgeon control and positioning during EYE/ENT procedures. Dual Arm allows independent positioning for enhanced surgeon comfort



## Dual Arm



# Replacement Stretcher Pads



## Hausted Stretcher Mattress Pads

A Hausted Comfort Mattress Pad is standard on Hausted Stretchers. The 2 layers of foam provide greater patient comfort and the fluid and moisture-resistant cover is known for its durability and easy cleaning. Replacement Mattress Pads for Hausted and many other manufacturer models are available from your Hausted/Graham-Field representative or customer service.

## Clinical Care Mattress Pads

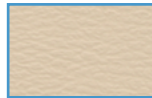
The Clinical Care 600C Stretcher Mattress Pad is an excellent option for those areas where longer patient stays can occur. The 5 in (13 cm) thickness provides maximum support and pressure reduction properties in comparison to a standard pad. The contour-cut grid and tri-laminate (3 layer) design provides improved patient immersion, greater airflow, and extended patient use. The fluid-resistant 4-way Stretch Urethane Cover keeps the patient cool and comfortable while providing maximum resistance against spills, staining and odors.

As Interior Designers and Facility Managers play an increasing role in the selection of patient handling systems, the look, fit and finish of procedural chairs used in facilities becomes an integral part of the selection process. Hausted offers a variety of upholstery color upgrades for its line of surgical chairs in the Patriot Plus Vinyl series.

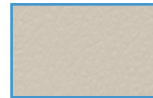
## Patriot Plus Colors



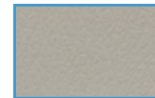
PAT-427  
Bluebridge



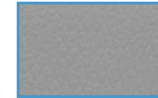
PAT-8504  
Sand



PAT-8602  
Oatmeal



PAT-8604  
Concrete



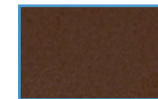
PAT-8567  
Dove



PAT-432  
Imperial Blue



PAT-8615  
Berry



PAT-8516  
Chestnut



CE Partner4U BV  
Esdoornlaan 13 3951DB  
Maarn The Netherlands  
[www.cepartner4u.eu](http://www.cepartner4u.eu)

GF:1600018Rev:E21

1.770.368.4700

Information contained herein is subject to change without notice. The most current and complete product information can be found on our website.

[www.grahamfield.com](http://www.grahamfield.com)  
[www.hausted.com](http://www.hausted.com)



© 2016, GF Health Products, Inc. All Rights Reserved.  
Hausted is a trademark of GF Health Products, Inc.  
GF Health Products, Inc. is an ISO 13485:2016 / MDSAP Certified Company

