

## Features exclusive to Interfyl

Can be used with acute injuries and/or chronic conditions

Intended for homologous use (does not contain amnion)

Ready to use with room temperature storage

10-year shelf life

Contains only the key components of connective tissue matrix

Available in **flowable** and **particulate** form to meet a variety of surgical application needs



**0.3 mL Flowable**  
Product code: HCTM030

**0.6 mL Flowable**  
Product code: HCTM060

**1 mL Flowable**  
Product code: HCTM010

**1.5 mL Flowable**  
Product code: HCTM015



**50 mg Particulate**  
Product code: HCTM050

**100 mg Particulate**  
Product code: HCTM100

For more information please contact Celularity at **1-844-963-2273** or visit [interfyl.net](http://interfyl.net)

**Interfyl**<sup>®</sup>  
Human Connective Tissue Matrix  
A Celularity Innovation

REFERENCE: 1. Pashuck ET, Mao Y, Kim K, John K, Smiell J, Bhatia MB. A Human Placenta-Derived Decellularized Connective Tissue Matrix (CTM) Supports Cellular Functions Involved in Wound Healing Processes. Symposium on Advanced Wound Care Fall (SAWC Fall). 2016.

Interfyl<sup>®</sup> is a registered trademark of Celularity Inc.  
For product information or adverse reaction reporting, telephone 1-844-963-2273.  
Please refer to the Interfyl<sup>®</sup> Package Insert for complete product information.  
©2021 Celularity Inc. All rights reserved. INT-2021-005



# The first choice in repairing surgical tissue defects

## Interfyl<sup>®</sup> Connective Tissue Matrix (CTM)

Your first choice in healing soft tissue deficits and injuries. **Highly adaptable** and effective at **replacing or supplementing damaged tissue**, across a wide-variety of conditions.

**Interfyl**<sup>®</sup>  
Human Connective Tissue Matrix  
A Celularity Innovation

### INDICATIONS FOR USE

(For surgical indications) Interfyl is intended for use as the replacement or supplementation of damaged or inadequate integumental tissue. Indications include, but are not limited to, treatment of soft tissue voids, correction of soft tissue defects, soft tissue augmentation during repair of dehisced or complicated surgical closures and repair of small surgical defects resulting from either medical or surgical conditions including those with exposed vital structures (bone, tendon, ligament, or nerve).

(For wound indications) Interfyl is intended for use as the replacement or supplementation of damaged or inadequate integumental tissue. Indications include, but are not limited to: augmentation of deficient/inadequate soft tissue and treatment of deep dermal wounds; surgical wounds; soft tissue voids as a result of tunneling wounds, fistula tracts, or dermal undermining-including those with exposed vital structures (bone, tendon, ligament, or nerve).

### CONTRAINDICATIONS, WARNINGS, AND PRECAUTIONS

Interfyl should not be used in clinically infected sites. If a recipient had an adverse reaction related to previous use of Interfyl, do not re-apply.

Do not use Interfyl for intravenous, intra-arterial, intra-ocular, or intrathecal applications.

Interfyl must be used prior to the expiration date on the product pouch. Once opened, Interfyl must be used within two hours or discarded per institutional procedures. The contents are sterile if the vial/syringe (container) is unopened and undamaged. Do not sterilize.

For product information, product complaints, or adverse reaction reporting, call 1-844-963-2273.

Please refer to the Interfyl Package Insert for complete product information.

# Support healing and functional tissue restoration

Interfyl is a decellularized human placental connective tissue matrix (CTM) to be used for the replacement or supplementation of damaged or inadequate integumental tissue.\* **Unlike standard therapies, Interfyl provides a native extracellular matrix (ECM) for cell attachment, as shown in *in vitro* data.**<sup>1</sup>

## What makes Interfyl unique?

### Does Not Contain Amnion

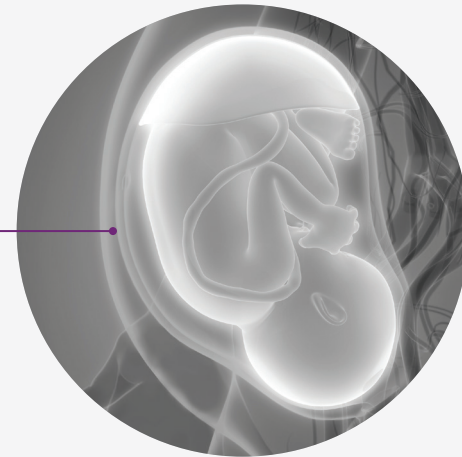
Interfyl contains only connective tissue matrix.

### The Chorion Difference

The **only CTM filler derived exclusively from the chorionic plate** of the human placenta.

### Minimally Processed

Minimal processing helps retain the fundamental structure and functional characteristics of native connective tissue.



### Highly Adaptable

Suited for a **variety of surgical applications** where there is a need to replace or supplement damaged or inadequate integumental tissue.

### Can Fill Irregular Spaces

Interfyl's flowable form enables it to **conform to challenging contours**, filling irregular spaces, or soft tissue deficits resulting from trauma or surgery.

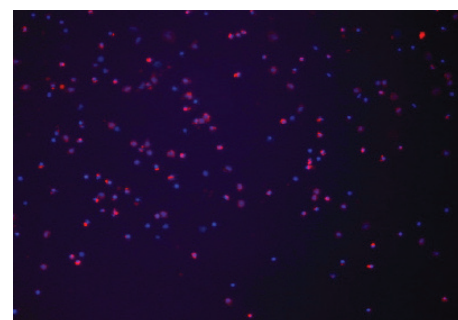
### Contains no residual growth factors, cytokines, cells, cell debris, or DNA

Serves as a cell-friendly structure for cell attachment within hours. Cell attachment is a natural stimulus for the orderly release of growth factors to **support the body's natural healing process.**

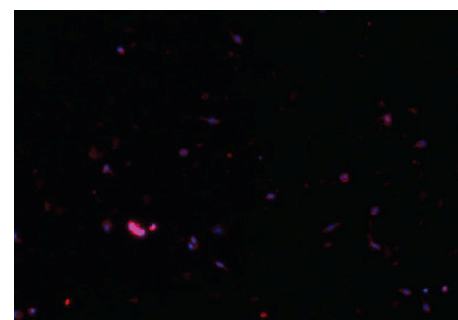
\*21 CFR, Part 1271.10(a)

## *In vitro* studies indicate that Interfyl supports cellular functions in soft tissue management<sup>1</sup>

### Human monocytes on CTM show good adherence and viability<sup>1</sup>

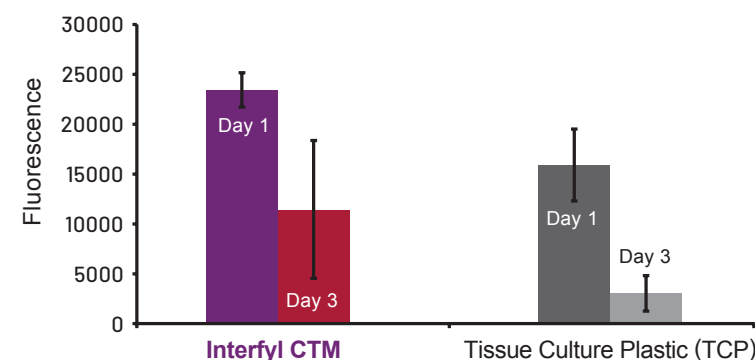


Interfyl CTM



Tissue Culture Plastic (TCP)

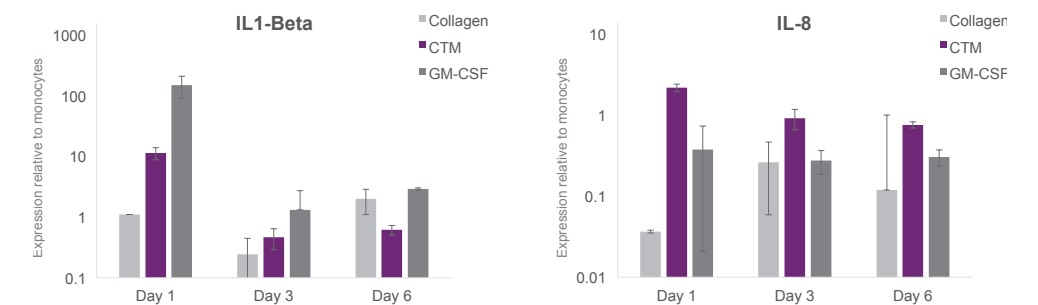
Monocyte viability on CTM and TCP. More monocytes adhered to CTM than to TCP at 24 h.<sup>1</sup>



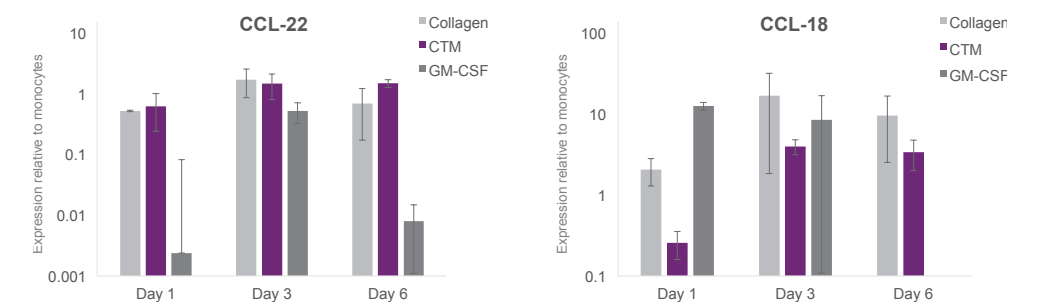
The viability of monocytes on CTM and TCP was measured using alamarBlue assay at Day 1 and Day 3. There were significantly more monocytes on CTM than on TCP at both time points.<sup>1</sup>

### Interfyl CTM provided a natural, native ECM that supported efficient transition from M1 macrophages (pro-inflammatory) to M2 macrophages (healing/remodeling)<sup>1</sup>

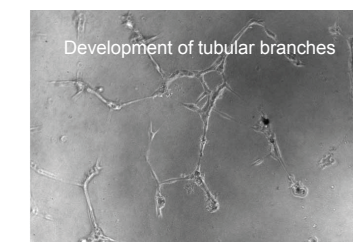
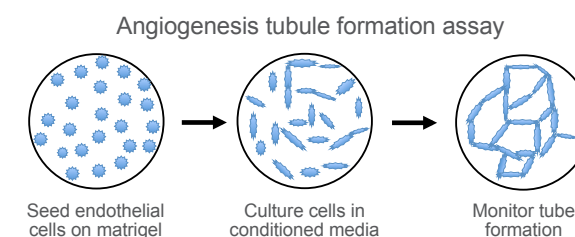
**Pro-inflammatory**  
Demonstrated a steady decrease of pro-inflammatory factors over 6 days



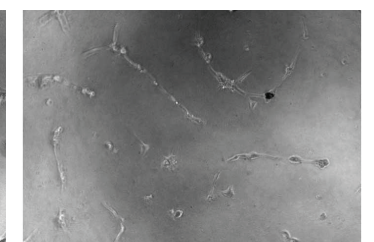
**Anti-inflammatory**  
Demonstrated a steady increase of anti-inflammatory factors over 6 days



### Interfyl CTM supports tube formation of endothelial cells, a precursor to angiogenesis, which enables blood flow and revascularization of the damaged tissue.<sup>1</sup>



Interfyl CTM



Tissue Culture Plastic (TCP)