



## Anterior Membrane Dystrophy treatment with Biovance 3L Ocular

**Patient Background**  
**Female | Age: 87**

Anterior Membrane Dystrophy

**Anish U. Shah, M.D. – Norwich, CT**

"I've had successful experience using Biovance 3L in ophthalmic surgeries".

### PRESENTATION

**History of Present Illness:**

The patient presents with a chief complaint of the eyes "deteriorating" over the past few months. She likes to read and is no longer able to see the small print due to discomfort and foreign body sensation with prolonged reading. Also has difficulty seeing smaller print on the TV.

Patient presents with history of dry eye syndrome, primary open-angle glaucoma, epiretinal membrane and macular drusen in both eyes.

Supportive Treatment included lubricants eye drops, hyperosmotic agents and bandage contact lenses.

**Ophthalmic Surgery:**

History of cataract extraction both eyes - H/O: YAG laser capsulotomy both eyes

**Current Ophthalmic Medications:**

Latanoprost 0.005% QHS OU, Muro 128 5% ointment QHS OU, Refresh Classic (PF) 1.4-0.6% QD both eyes

**Findings:**

Epithelial and sub epithelial scarring in map/dot configuration

**Ocular Diagnosis:**

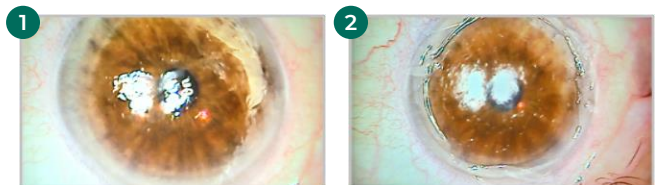
Anterior Basement Membrane Dystrophy

### PLAN

To use Biovance 3L Ocular amniotic membrane tissue to create a substrate to allow repopulation of the anterior corneal surface with normal Bowman's, epithelium and epithelial basement membrane.

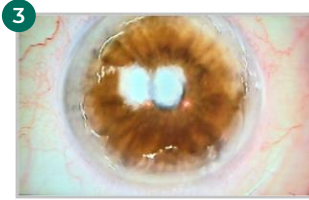
### PROCEDURE

1. Immediate pre-op picture of poor irregular surface epithelium
2. Post removal of poor epithelium, visible sub epithelial debris from Anterior Basement Membrane Dystrophy

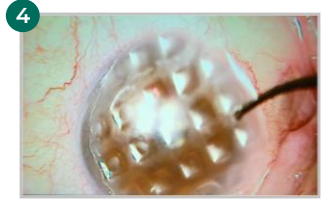


## PROCEDURE (cont.)

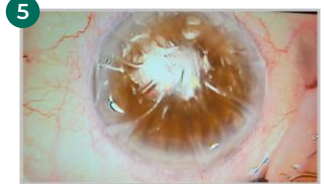
3. Immediately status post burring of all sub-epithelial scarring and Anterior Basement Membrane Dystrophy debris



4. Placement of Biovance 3L Ocular amniotic membrane tissue



5. Bandage Contact Lens placed over Biovance 3L Ocular amniotic membrane tissue



## POST-OP

6. One month post, surface clear, patient much more comfortable in her activities of daily living



## INDICATIONS FOR USE

BIOVANCE-3L Ocular is an allograft intended for use as a biological membrane covering that provides the extracellular matrix structure. As a barrier membrane, BIOVANCE-3L Ocular is intended to protect the underlying tissue and preserve tissue plane boundaries. Applications include, but are not limited to, corneal and conjunctival related injuries or defects such as corneal epithelial defects, pterygium repair, fornix reconstruction, and other procedures.

## CONTRAINDICATIONS, WARNINGS, AND PRECAUTIONS

BIOVANCE-3L Ocular is contraindicated in patients with a known hyper-sensitivity to BIOVANCE-3L Ocular.

If a patient has an adverse reaction related to the use of BIOVANCE-3L Ocular, immediately discontinue its use. BIOVANCE-3L Ocular should not be used on clinically infected wounds.

The pouch contents are sterile if the pouch is unopened and undamaged. Do not use if package seal is broken. Discard material if mishandling has caused possible damage or contamination. Do not resterilize.

BIOVANCE-3L Ocular must be used prior to the expiration date on the product pouch. BIOVANCE-3L Ocular should not be used together with a collagenase product on the wound.

## FOR PRODUCT INFORMATION OR ADVERSE REACTION REPORTING, CALL 1-844-963-2273.

For more information, please contact Celularity at 1-844-963-2273 or visit [www.biovance.net](http://www.biovance.net)

Available in **ocular-specific shapes** and **6 different sizes** to meet your application needs



BIOVANCE 3L Ocular® and Celularity are registered trademarks of Celularity Inc.  
© 2022 Celularity Inc. All rights reserved. B3L-2022-001 January 2022